



APPLICATION

A complete Advanced Metering Infrastructure (AMI) and Smart City Solution that enables utilities to optimize operations through data collection and advanced analytics

FEATURES

- ▶ LoRa Alliance public network
- ▶ 2-way communication
- ▶ Hosted platform
- ▶ Meter Data Management (MDM)
- ▶ Enhanced consumer engagement
- ▶ Migratable from AMR to AMI

APPLICATION

Certified LoRaWAN™ Endpoint for use in the Diehl IZAR system

FEATURES

- ▶ 2-way universally compatible endpoint
- ▶ Migratable from Mobile, to Fixed Network, to Smart City
- ▶ 90 days of hourly data (e.g., readings, event logs and extended data)
- ▶ On demand reading, instant alarm notification
- ▶ Dual endpoint
- ▶ Advanced AMR/AMI alerts and errors
- ▶ AES encryption



IZAR POLARIS

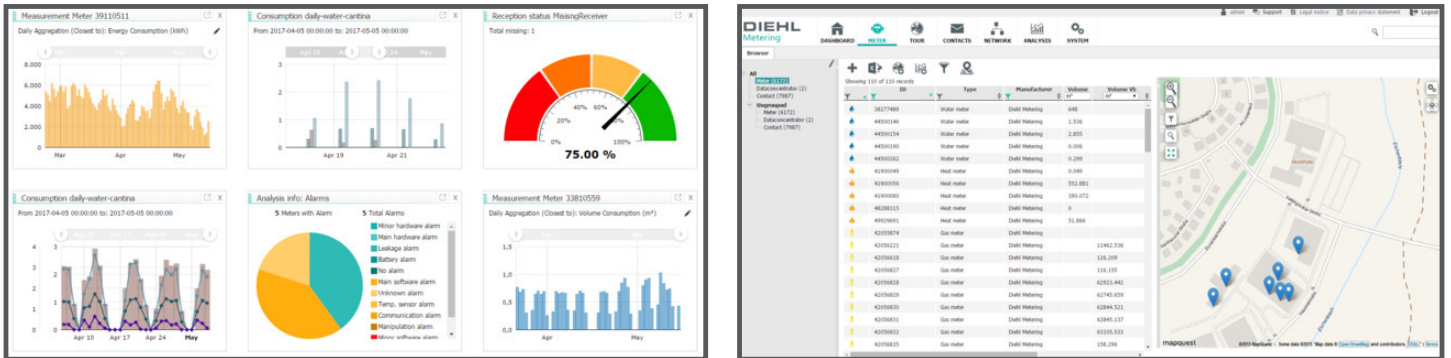
APPLICATION

Certified LoRaWAN™ Collection Point for use in the Diehl IZAR system

FEATURES

- ▶ ISM bandscanning for optimum LoRa performance
- ▶ Non-license ISM frequency - Operates in the narrow 902-928 MHz ISM band
- ▶ Universal backhaul
- ▶ 2-way communication
- ▶ Remotely upgradable
- ▶ Easy external port access to SIM and USB connectors





APPLICATION

Software analytic package for use in the Diehl IZAR system

BASIC PACKAGE FEATURES

- ▶ Highly adaptable software design focused on mass data management
- ▶ Integrated map view for easy organization of devices and meter routes
- ▶ High-performance analytics (e.g., for leak detection)
- ▶ Seamless interoperability with IZAR@Mobile
- ▶ Alarm monitoring to notify of problems in the meter network
- ▶ Interactive dashboard view for system monitoring
- ▶ Email notification of meter readings, alarms or analysis results
- ▶ User rights management allows for limited access of users to meter groups
- ▶ Standard reports (e.g., compare meter volume consumption, detect alarms or find missing meter reads)
- ▶ Use REST API for easy connection to third party software and quick implementation process

SR1 05/2019



<https://www.diehl.com/metering/us/en/>

