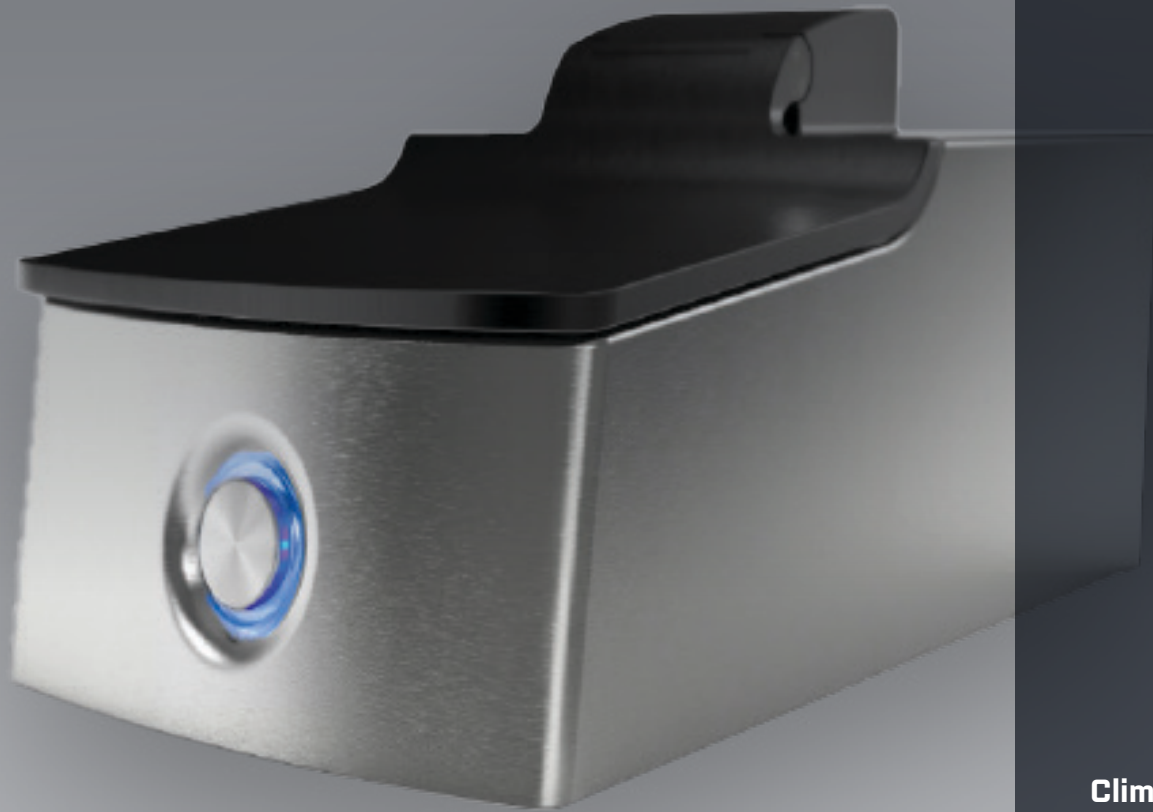


AEROSOL- GWDU

GALLEY WASTE DISPOSAL UNIT

DIEHL
Aviation



**Climbing higher.
Together**

CHARACTERISTICS

Since 1997, Galley Waste Disposal Units of various suppliers enable the disposal of small – partly liquid – galley waste directly into the aircraft's waste tanks. In contrast, Diehl Aviation's GWDU is combining an innovative aerosol-air vectoring injection system with a specific industrial design approach. The unique one-box architecture is finished with brushed metal surfaces and a one button user interface as a multi-colored light ring, that provides a status feedback. This unit is available for A350XWB and Boeing 777X.

BENEFITS

- The innovative aerosol-air vectoring injection system provides a substantially increased flushing efficiency
- Your advantage: Saving remarkable amounts of potable water and thus weight for each individual flush, while maintaining hygienic standards. The innovative aerosol-air vectoring injection system provides a substantially increased flushing efficiency
- Diehl Aviation's new industrial design approach turns a galley support equipment, that was formerly rather hidden in galley's appearance, into an eyecatcher for both cabin staff and passengers alike