

WESAN WS G

BULK WATER METER | WOLTMAN

DIEHL
Metering



APPLICATION

For measuring of fluctuating flows in the utility sector.

FEATURES

- ▶ Calibratable and exchangeable measuring insert
- ▶ For horizontal installation
- ▶ Sealed measuring insert for better accuracy
- ▶ Hydraulic bearing relief
- ▶ Encapsulated counter of glass/copper IP 68
- ▶ Complete head unit with counter and sensors can be rotated by 350° for easier reading
- ▶ System compatibility, WESAN WS G can be extended with IZAR RADIO (clip-on radio module) or IZAR PULSE (clip-on pulse module)
- ▶ Strong protection against magnetic manipulation

WESAN WS G

BULK WATER METER | WOLTMAN

GENERAL

| WESAN WS G | | |
|-------------------------------|----|---------------------|
| Medium temperature range | °C | 1 ... 30 |
| Temperature safety | °C | 1 ... 50 |
| Ambient operating temperature | °C | 1 ... 55 |
| Ambient storage temperature | °C | 1 ... 55 |
| Nominal pressure | PN | bar 16 ¹ |
| Protection class | | IP 68 |

¹ see also special versions

TECHNICAL DATA

| Nominal diameter | DN | mm | 50 | 65 | 80 | 100 | 150 |
|------------------------------------|----------------|-------------------|-------|------|-------|------|-------|
| Permanent flow rate | Q ₃ | m ³ /h | 25 | 40 | 63 | 100 | 250 |
| Minimum flow rate | Q ₁ | m ³ /h | 0.63 | 1 | 1.58 | 2.5 | 6.25 |
| Transitional flow rate | Q ₂ | m ³ /h | 1 | 1.6 | 2.52 | 4 | 10 |
| Overload flow rate | Q ₄ | m ³ /h | 31.25 | 50 | 78.75 | 125 | 312.5 |
| Starting flow rate | | l/h | 60 | 60 | 90 | 90 | 150 |
| Flow rate at 0.1 bar pressure loss | | m ³ /h | 21 | 22 | 55 | 60 | 143 |
| Pressure loss at Q ₃ | | bar | 0.14 | 0.34 | 0.13 | 0.28 | 0.31 |

APPROVAL

| Nominal diameter | DN | mm | 50 | 65 | 80 | 100 | 150 |
|---|----|----|---------|---------|---------|---------|---------|
| MID (A 0445/3505/2011) | | | • | • | • | • | • |
| Dynamic range (Q ₃ /Q ₁) | R | | 40•H | 40•H | 40•H | 40•H | 40•H |
| Potable water | | | AoC DEU | AoC DEU | AoC DEU | AoC DEU | AoC DEU |

REACH

Information pursuant to Article 33 (1) of Regulation (EC) No 1907/2006 of the European Parliament and of the Council of 18 December 2006:

This product series contains components with the following substances in a concentration of more than 0.1% weight by weight (w/w):
- Lead (CAS no.: 7439-92-1)

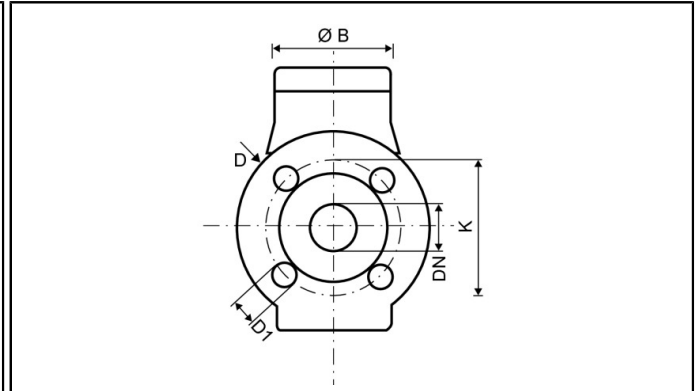
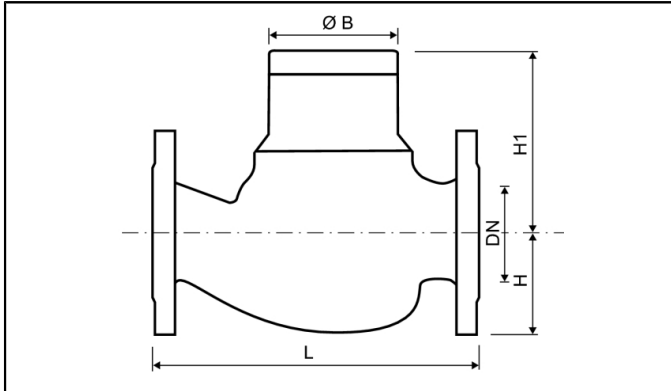
DISPLAY RANGE

| Nominal diameter | DN | mm | 50 | 65 | 80 | 100 | 150 |
|------------------------------------|----|----|----|----|----|-----|-----|
| 0.5 l ... 999,999 m ³ | | | • | • | • | • | |
| 5.0 l ... 9,999,999 m ³ | | | | | | | • |

WESAN WS G

BULK WATER METER | WOLTMAN

DIMENSIONS

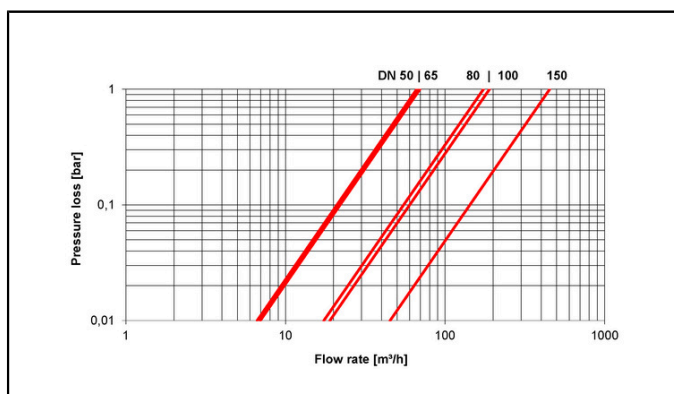


| Nominal diameter | DN | mm | 50 | 65 | 80 | 100 | 150 |
|-----------------------------------|-----|-----|------|------|-------|-----|-----------|
| Overall length (DIN 19625) | L | mm | 270 | 300 | 300 | 360 | 430 / 500 |
| Overall length (DIN ISO 4064) | L | mm | 300 | 300 | 350 | 350 | 500 |
| Flange diameter | D | mm | 165 | 185 | 200 | 220 | 285 |
| Hole circle diameter | K | mm | 125 | 145 | 160 | 180 | 240 |
| Number of screwholes | | pcs | 4 | 4 | 4 / 8 | 8 | 8 |
| Screw hole diameter | D1 | mm | 18 | 18 | 18 | 18 | 23 |
| Height | H | mm | 85 | 97 | 102 | 113 | 141 |
| Height | H1 | mm | 135 | 135 | 180 | 190 | 351 |
| Height to remove measuring insert | | mm | 240 | 240 | 330 | 340 | 620 |
| Diameter | Ø B | mm | 110 | 110 | 110 | 110 | 110 |
| Meter width | | mm | 173 | 173 | 239 | 239 | 310 |
| Weight | | kg | 14.5 | 17.7 | 24 | 28 | 79.5 |

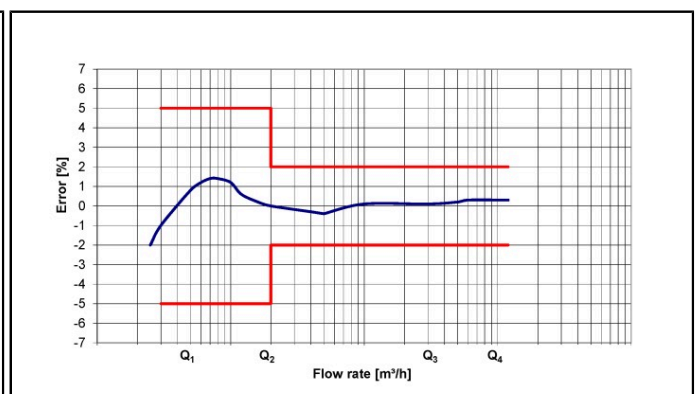
SPECIAL VERSIONS

- Versions with different nominal pressure on request
- Flange for ANSI and BS on request
- Temperature up to 90 °C on request
- Special pulse values on request
- Special overall lengths on request

PRESURE LOSS GRAPH / TYPICAL ERROR GRAPH



Pressure loss graph



Typical error graph