

IZAR SOLUTION FOR LoRaWAN® CONNECTIVITY

Go beyond automated meter reading –
with AMI based on LoRaWAN® and OMS

Are you interested in building a fixed LoRaWAN® network that provides two-way communication, while remaining agnostic with several systems and allowing for easy integration of a mobile reading infrastructure?


Diehl Metering streamlines your AMI (Advanced Metering Infrastructure) implementation with a comprehensive LoRaWAN® and mobile meter management solution. Our advanced two-way communication capabilities unlock the full potential of LoRaWAN®, empowering you to optimize operations and gain valuable data insights.

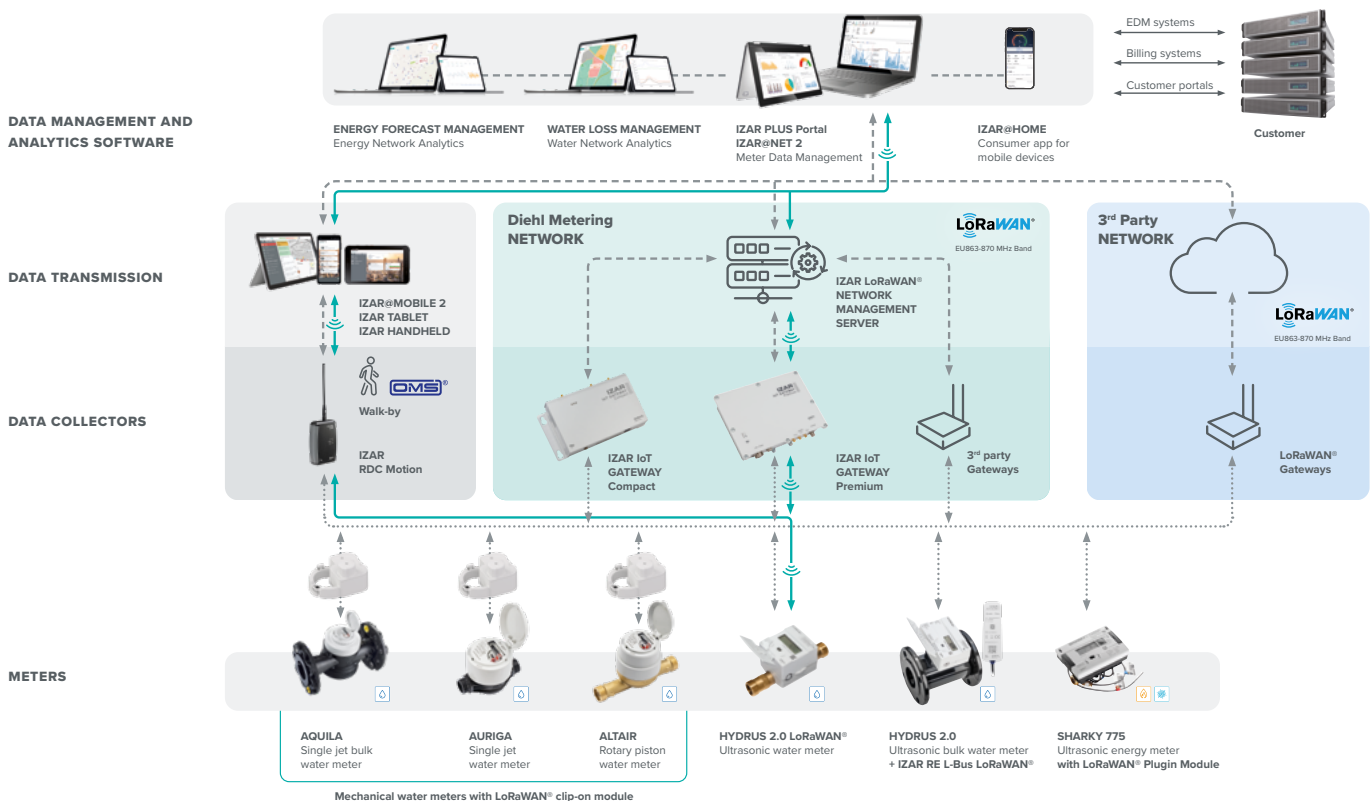
OMS over LoRaWAN®

Our smart meters leverage LoRaWAN® for long-range communication within the OMS framework*.

Your Benefit: Reliable long-range communication, seamless interoperability, secure communication.

IZAR SOLUTION OVERVIEW

Our multiconnectivity solutions support a wide range of technologies, including MBus, wMBus, mioty®4OMS, mioty®, LoRaWAN®, and NB-IoT. Here is an overview of our LoRaWAN®-supported portfolio, which includes everything you need – from meters and gateways to powerful software – to seamlessly monitor and manage your water or energy network utilizing LoRaWAN® technology. The  connects all the products that enable the two-way use cases explained on page 2.



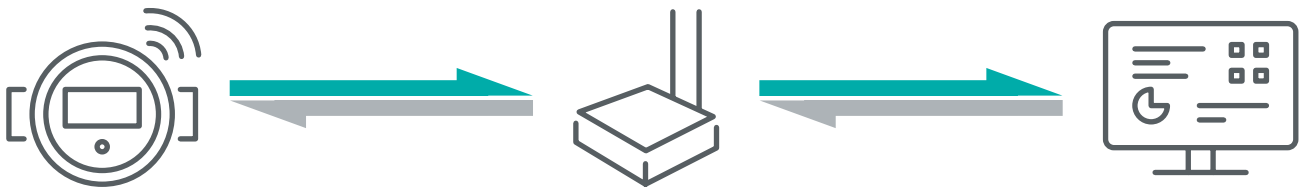
Use of the LoRa Alliance® and LoRaWAN® marks is pursuant to license from the LoRa Alliance®.
*The 'OMS Technical Report 06 – OMS over LoRaWAN®' is publicly available and describes the OMS over LoRaWAN® scheme in detail.

OPTIMIZE PERFORMANCE WITH KEY BENEFITS:

- ▶ **Unrivaled Data Security:**
Your data is protected with end-to-end encryption from meter to the IZAR PLUS PORTAL. This encryption protects the data from unauthorized interpretation as it travels. Plus, this robust system simplifies compliance with GDPR regulations.
- ▶ **Seamless Integration:**
Efficient integration into your existing system using Open Metering System (OMS) Specification over LoRaWAN® technology.
- ▶ **Real-Time Visibility:**
With our digital twin, a dashboard that simplifies your analysis work, you're always informed about your current device configuration.
- ▶ **Reduced Maintenance Costs:**
Benefit from the long service life of the meter battery even under challenging conditions.
- ▶ **Backward Compatibility:** The system easily integrates with your existing LoRaWAN® infrastructure, including Diehl Metering's legacy systems.
- ▶ **Back-up Reading Mode:**
Our system also offers a parallel mobile reading solution based on OMS. This means you can use the meters even in areas where there is no LoRaWAN® network coverage.
- ▶ **Flexible business model:**
Choose between a cost-effective public LoRaWAN® network subscription or set up a private network to tailor the solution to your specific operational requirements.

TWO-WAY COMMUNICATION USE CASES

These advanced two-way communication capabilities build upon the foundation of our reliable one-way meter reading, unlocking a new dimension of value for your operations.



<p>REMOTE METER CONFIGURATION</p> <p>without any special equipment or physical access to the meter.</p> <p>Your benefit Convenient meter configuration, flexible data collection, easy adaptation to network changes.</p>	<p>REMOTE ALARM RESETTING</p> <p>of the alarm status and restarting the alarm evaluation as soon as a problem is solved.</p> <p>Your benefit Overview of current alarm status at all times, quick check of service success.</p>	<p>AUTOMATIC CLOCK SYNCHRONIZATION</p> <p>ensures that every meter records data at the exact same time.</p> <p>Your benefit Better comparison with different consumption profiles, smarter water distribution with sectorization (or DMA zones).</p>	<p>READOUT OF THE HISTORY LOG</p> <p>of the meter without physical access to the meter itself.</p> <p>Your benefit Faster clarification of customer concerns, thanks to accurate information.</p>
---	---	--	---

 **160+ YEARS**
OF EXPERIENCE IN METERING TECHNOLOGY AND A PROUD MEMBER OF THE LoRa Alliance®.

 **60 MILLION**
COMMUNICATIVE METERS AND RADIO MODULES INSTALLED WORLDWIDE

INTERESTED?
LET'S TALK ABOUT YOUR CHALLENGES!

