

## IZAR@MOBILE 2 FOR WINDOWS™

### METER DATA MANAGEMENT



#### APPLICATION

IZAR@MOBILE 2 is a software designed for fast and efficient mobile reading of system components and multi-energy smart meters. Its ergonomic and tactile interface makes it intuitive and user-friendly. Its map view of the meters allows precise guidance during the reading of the tour.

To take full advantage of the software's features, Diehl Metering supports the following Windows device Microsoft Surface Go 2. It can also work with other Windows-based devices such as laptops and tablets.

Connected to the IZAR PLUS PORTAL or IZAR@NET 2 management software, IZAR@MOBILE 2 offers many enhanced features such as multi-tours planning & management and remote or local data transfer.

With its XLSX interface to import or export data, it operates completely independently as well.

#### FEATURES

- Mobile walk-by or drive-by reading of all types of meters (water, heat, cold, gas and electricity) and heat cost allocators
- Reduced reading costs
- Accurate electronic transmitted values
- No customer claims
- No appointments necessary
- Map display of meters location
- On-site configuration of meters and system components

## SYSTEM REQUIREMENTS

General requirements:

- Administration rights with all security updates
- Windows version: operating system (32/64 bits), Windows 10 Pro or Enterprise / Windows 11 Pro or Enterprise

Hardware requirements:

- Display 1024x768 pixels minimum
- Windows version: dual-core processor 2 GHz minimum / 4 GB RAM minimum
- 10 GB free disk space
- Integrated GPS module for full map support
- Bluetooth® interface for communication with IZAR BT OH, IZAR BT RECEIVER, IZAR RDC MOTION or IZAR STELLA MOTION
- GPS/LTE, LAN, WLAN interface for IZAR@NET 2 connection
- USB, LAN, RS232 or modem to communicate with IZAR CENTER M-Bus master

## GENERAL FEATURES

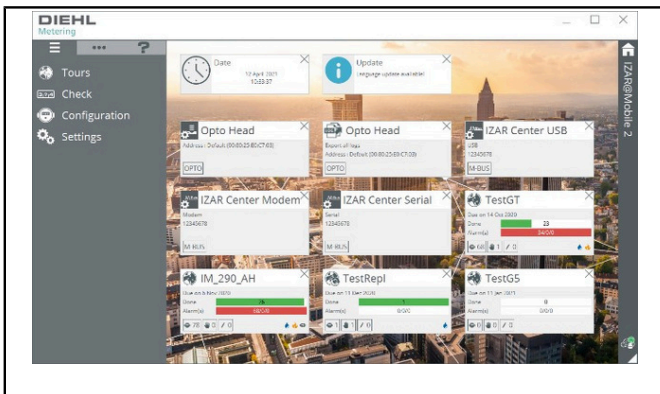
- Interactive map for meter location to simplify tour reading
- Dashboard for quick access to tours and configuration
- XLSX import and export of up to 200 meters/tour (expandable up to 2,000 meters with XLSX 2000 licence module)
- Meter replacement management together with IZAR PLUS PORTAL/IZAR@NET 2
- Configuration of meters, modules and system devices incl. function to create, save and apply profiles

## AVAILABLE MODULES

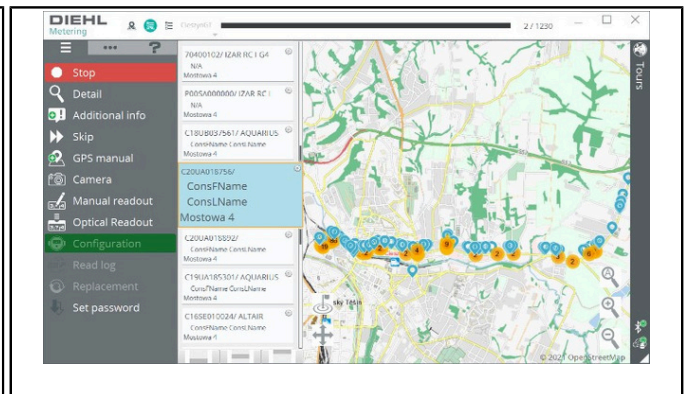
### IZAR@MOBILE 2 for Windows™

|                                |  |
|--------------------------------|--|
| IZAR@MOBILE 2 - Mobile Reading | XLSX export and import of a tour with up to 200 meters for mobile reading, incl. SET Expert module |
| IZAR@MOBILE 2 - XLSX 2000      | Expands the XLSX export and import of a tour up to 2,000 meters                                    |
| IZAR@MOBILE 2 - SET Expert     | Configuration of meters and system devices via IZAR BT OH or M-Bus master IZAR CENTER              |

## APPLICATION SCREENSHOTS - WINDOWS DEVICES



Dashboard



Map overview

## **Economic Actor Information**

Applicable regulation and legal obligations for products may change.

DIEHL METERING monitors applicable regulation to ensure their products comply at the date of placing on the market.

Each economic actor making products available on the market thereafter must independently keep informed about the current applicable regulation.

For questions, please contact: [metering-germany-info@diehl.com](mailto:metering-germany-info@diehl.com)

Diehl Metering GmbH  
Donaustraße 120  
90451 Nürnberg  
Germany  
Phone: +49 911 6424-0  
[metering-germany-info@diehl.com](mailto:metering-germany-info@diehl.com)  
[www.diehl.com/metering](http://www.diehl.com/metering)

**EMPOWER A  
SUSTAINABLE  
FUTURE**