

# IZAR@MOBILE 2 FOR WINDOWS™

SOFTWARE



## APPLICATION

IZAR@MOBILE 2 is a software designed for fast and efficient mobile reading of system components and multi-energy smart meters. Its ergonomic and tactile interface makes it intuitive and user-friendly. Its map view of the meters allows precise guidance during the reading of the tour.

To take full advantage of the software's features, Diehl Metering supports the following Windows device Microsoft Surface Go 2. It can also work with other Windows-based devices such as laptops and tablets.

Connected to the IZAR PLUS PORTAL or IZAR@NET 2 management software, IZAR@MOBILE 2 offers many enhanced features such as multi-tours planning & management and remote or local data transfer.

With its XLSX interface to import or export data, it operates completely independently as well.

## FEATURES

- Mobile walk-by or drive-by reading of all types of meters (water, heat, cold, gas and electricity) and heat cost allocators
- Reduced reading costs
- Accurate electronic transmitted values
- No customer claims
- No appointments necessary
- Map display of meters location
- On-site configuration of meters and system components

## SYSTEM REQUIREMENTS

General requirements:

- Administration rights with all security updates
- Windows version: operating system (32/64 bits), Windows 10 Pro or Enterprise / Windows 11 Pro or Enterprise

Hardware requirements:

- Display 1024x768 pixels minimum
- Windows version: dual-core processor 2 GHz minimum / 4 GB RAM minimum
- 10 GB free disk space
- Integrated GPS module for full map support
- Bluetooth® interface for communication with IZAR BT OH, IZAR BT RECEIVER, IZAR RDC MOTION or IZAR STELLA MOTION
- GPS/LTE, LAN, WLAN interface for IZAR@NET 2 connection
- USB, LAN, RS232 or modem to communicate with IZAR CENTER M-Bus master

## GENERAL FEATURES

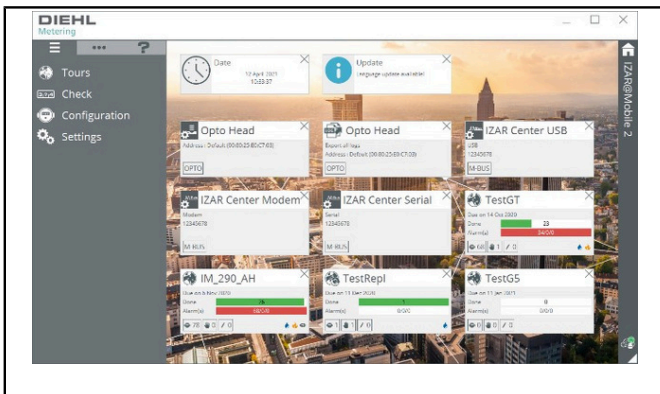
- Interactive map for meter location to simplify tour reading
- Dashboard for quick access to tours and configuration
- XLSX import and export of up to 200 meters/tour (expandable up to 2,000 meters with XLSX 2000 licence module)
- Meter replacement management together with IZAR PLUS PORTAL/IZAR@NET 2
- Configuration of meters, modules and system devices incl. function to create, save and apply profiles

## AVAILABLE MODULES

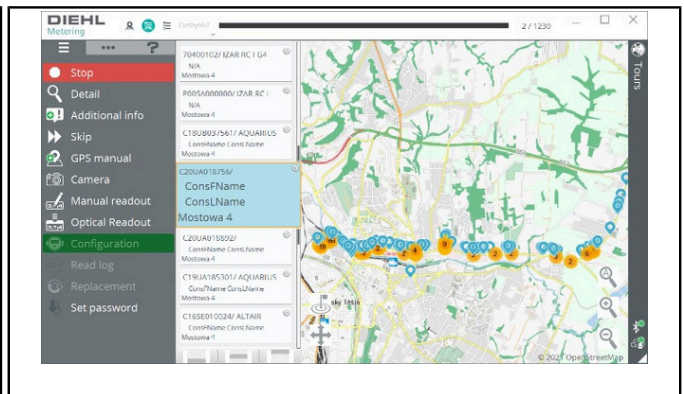
### IZAR@MOBILE 2 for Windows™

IZAR@MOBILE 2 - Mobile Reading	XLSX export and import of a tour with up to 200 meters for mobile reading, incl. SET Expert module
IZAR@MOBILE 2 - XLSX 2000	Expands the XLSX export and import of a tour up to 2,000 meters
IZAR@MOBILE 2 - SET Expert	Configuration of meters and system devices via IZAR BT OH or M-Bus master IZAR CENTER

## APPLICATION SCREENSHOTS - WINDOWS DEVICES



Dashboard



Map overview

### **Oplysninger om økonomiske aktører**

Gældende bestemmelser og juridiske forpligtelser for produkter kan ændre sig.

DIEHL METERING overvåger gældende lovgivning for at sikre, at deres produkter er i overensstemmelse på datoen for markeds lanceringen.

Hver økonomisk aktør, der lancerer produkter på markedet, skal derefter selv holde sig orienteret om den gældende lovgivning.

For spørgsmål, kontakt venligst: [metering-germany-info@diehl.com](mailto:metering-germany-info@diehl.com)

Diehl Metering ApS  
Glentevej 1  
6705 Esbjerg Ø  
Danmark  
Tlf.: +45 76 13 43 00  
Fax: +45 76 13 43 01  
[metering-denmark-info@diehl.com](mailto:metering-denmark-info@diehl.com)  
[www.diehl.com/metering](http://www.diehl.com/metering)

**EMPOWER A  
SUSTAINABLE  
FUTURE**