

CORONA MCI COMPOSITE 108

MULTI-JET METER | WET RUNNER

DIEHL
Metering



APPLICATION

Domestic water meter

FEATURES

- ▶ Modular compact multi-jet domestic meter with inductive scanning (without magnetic influence)
- ▶ Housing and screw head made of composite are confirm with the Drinking water Ordinance
- ▶ Resistant against dirt and aggressive water
- ▶ System capability, with standard applicable pulse output 1 l/pulse (inductive). CORONA MCI can be externalized in any way - with IZAR RADIO COMPACT 868 I (radio module) or IZAR PULSE I (pulse transmitter)
- ▶ Mounting position: horizontal (R 40 - 160), rising pipe / downpipe (R 40)
- ▶ Extremely low pressure loss and considerably extended measuring range
- ▶ Records very small amounts of water consumption
- ▶ Maximum long-term accuracy and absolutely corrosion-resistant
- ▶ Measuring data better than specified by calibration regulations
- ▶ Capable of withstanding any load for a short time
- ▶ Outlet prepared for installing a non-return valve (DVGW approved)

CORONA MCI COMPOSITE 108

MULTI-JET METER | WET RUNNER

GENERAL

CORONA MCI COMPOSITE 108			
Medium temperature range	°C	1 ... 30	
Temperature safety	°C	1 ... 50	
Ambient operating temperature	°C	1 ... 55	
Ambient storage temperature	°C	1 ... 55	
Nominal pressure	PN	bar	16
Display range	0.05 l ... 99,999 m ³		
Pulse value	l/pulse 1		
Protection class	IP 68		

TECHNICAL DATA

Nominal diameter	DN	mm	20
Permanent flow rate	Q ₃	m ³ /h	4
Overload flow rate	Q ₄	m ³ /h	5
Transitional flow rate	Q ₂	l/h	40
Minimum flow rate	Q ₁	l/h	25 ¹
Starting flow rate	l/h		6
Pressure loss at Q ₃	bar		0.6
Flow rate at 1 bar pressure loss	m ³ /h		6.5

¹ based on R 160

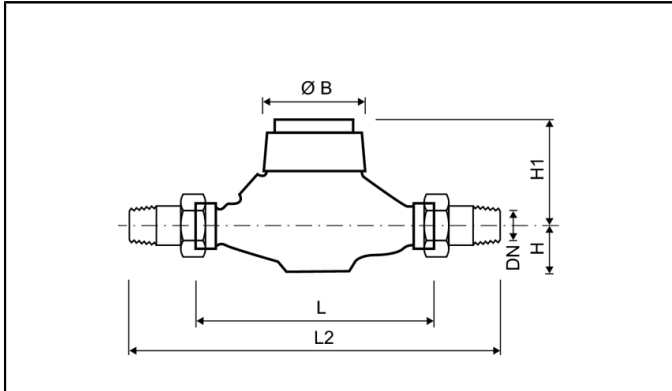
APPROVAL

Nominal diameter	DN	mm	20
Permanent flow rate	Q ₃	m ³ /h	4
MID	TH 8629		
Dynamic range horizontal installation (Q ₃ /Q ₁)	R	40 / 80 / 100 / 160	
Dynamic range vertical installation (Q ₃ /Q ₁)	R	40	

CORONA MCI COMPOSITE 108

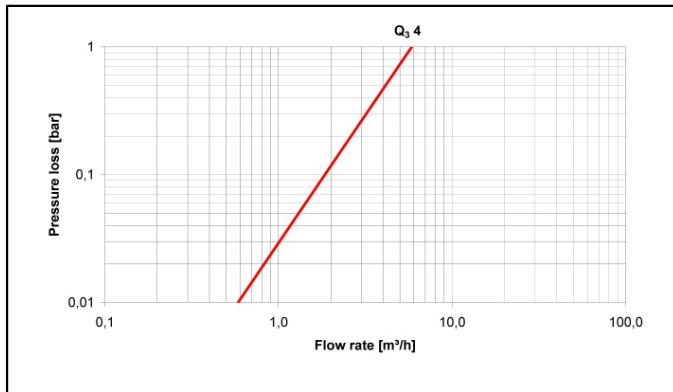
MULTI-JET METER | WET RUNNER

DIMENSIONS

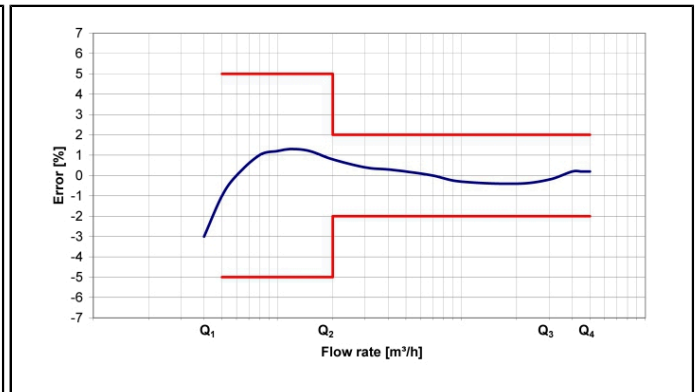


Nominal diameter	DN	mm	20
Permanent flow rate	Q ₃	m ³ /h	4
Overall length (DIN ISO 4064)	L	mm	190
Overall length with coupling	L2	mm	288
Connection thread on meter (ISO 228/1)		Inch	G1B
Connection thread of coupling (DIN 2999)		Inch	R ³ / ₄
Height	H	mm	27
Height	H1	mm	105
Diameter	Ø B	mm	95
Weight without coupling		kg	0.62
Weight with coupling		kg	0.92

PRESSURE LOSS GRAPH / TYPICAL ERROR GRAPH



Pressure loss graph



Typical error graph