

# CORONA MCI COMPOSITE 108

Multi-Jet Meter | Wet Runner

**DIEHL**  
Metering



## APPLICATION

Domestic water meter

## FEATURES

- ▶ Modular compact multi-jet domestic meter with inductive scanning (without magnetic influence)
- ▶ Housing and screw head made of composite are confirm with the Drinking water Ordinance
- ▶ Resistant against dirt and aggressive water
- ▶ System capability, with standard applicable pulse output 1 l/pulse (inductive). CORONA MCI can be externed in any way - with IZAR RADIO COMPACT 868 I (radio module) or IZAR PULSE I (pulse transmitter)
- ▶ Mounting position: horizontal (R 40 - 160), rising pipe / downpipe (R 40)
- ▶ Extremely low pressure loss and considerably extended measuring range
- ▶ Records very small amounts of water consumption
- ▶ Maximum long-term accuracy and absolutely corrosion-resistant
- ▶ Measuring data better than specified by calibration regulations
- ▶ Capable of withstanding any load for a short time
- ▶ Outlet prepared for installing a non-return valve (DVGW approved)

# CORONA MCI COMPOSITE 108

Multi-Jet Meter | Wet Runner

## GENERAL

CORONA MCI COMPOSITE 108			
Medium temperature range	°C	1 ... 30	
Temperature safety	°C	1 ... 50	
Ambient operating temperature	°C	1 ... 55	
Ambient storage temperature	°C	1 ... 55	
Nominal pressure	PN	bar	16
Display range	0.05 l ... 99,999 m <sup>3</sup>		
Pulse value	l/pulse		1
Protection class	IP 68		

## TECHNICAL DATA

Nominal diameter	DN	mm	20
Permanent flow rate	Q <sub>3</sub>	m <sup>3</sup> /h	4
Overload flow rate	Q <sub>4</sub>	m <sup>3</sup> /h	5
Transitional flow rate	Q <sub>2</sub>	l/h	40
Minimum flow rate	Q <sub>1</sub>	l/h	25 <sup>1</sup>
Starting flow rate		l/h	6
Pressure loss at Q <sub>3</sub>		bar	0.6
Flow rate at 1 bar pressure loss		m <sup>3</sup> /h	6.5

<sup>1</sup> based on R 160

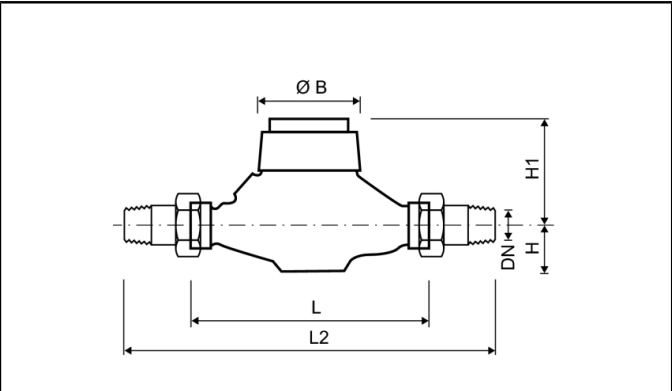
## APPROVAL

Nominal diameter	DN	mm	20
Permanent flow rate	Q <sub>3</sub>	m <sup>3</sup> /h	4
MID			TH 8629
Sanitary conformity			AoC DEU
Dynamic range horizontal installation (Q <sub>3</sub> /Q <sub>1</sub> )	R		40 / 80 / 100 / 160
Dynamic range vertical installation (Q <sub>3</sub> /Q <sub>1</sub> )	R		40

# CORONA MCI COMPOSITE 108

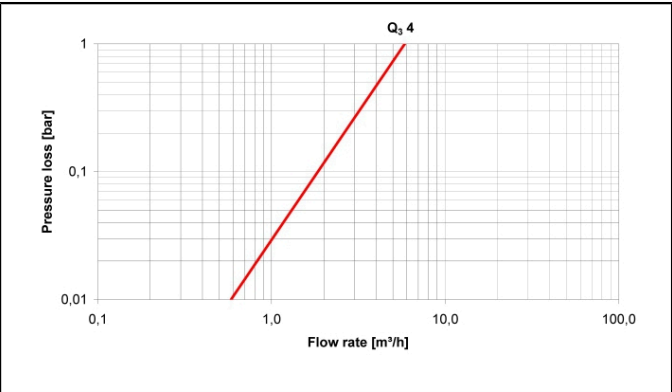
Multi-Jet Meter | Wet Runner

## DIMENSIONS

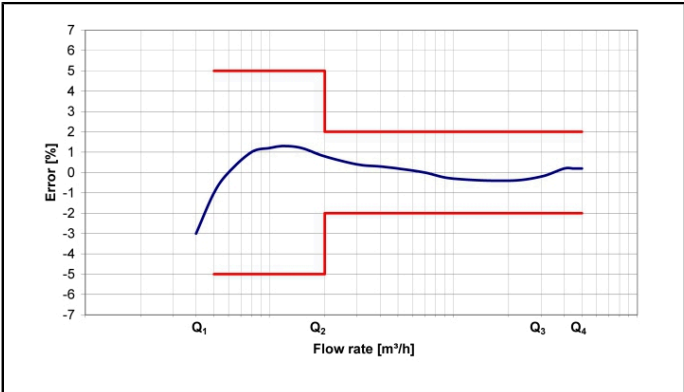


Nominal diameter	DN	mm	20
Permanent flow rate	Q <sub>3</sub>	m <sup>3</sup> /h	4
Overall length (DIN ISO 4064)	L	mm	190
Overall length with coupling	L2	mm	288
Connection thread on meter (ISO 228/1)		Inch	G1B
Connection thread of coupling (DIN 2999)		Inch	R <sup>3</sup> / <sub>4</sub>
Height	H	mm	27
Height	H1	mm	105
Diameter	Ø B	mm	95
Weight without coupling		kg	0.62
Weight with coupling		kg	0.92

## PRESSURE LOSS GRAPH / TYPICAL ERROR GRAPH



Pressure loss graph



Typical error graph