

ALTAIR MCI V5

ROTARY PISTON METER

DIEHL
Metering



APPLICATION

Domestic rotary piston water meter (only complete meter)

FEATURES

- ▶ Low noise level
- ▶ System compatibility, with standard applicable pulse output 1 l/pulse. ALTAIR MCI can be extended - with IZAR RADIO (radio module) or IZAR PULSE (pulse transmitter)
- ▶ Any mounting position + no calming sections necessary
- ▶ Low starting flow approximately 0.6 l/h permits recording of very small amounts of water
- ▶ Self-cleaning mechanism of measuring chamber
- ▶ Less exchange time as capsule and screw head is one part
- ▶ Self-cleaning mechanism of measuring chamber
- ▶ Encapsulated roller counter unit rotatable by 350°

ALTAIR MCI V5

ROTARY PISTON METER

METROLOGICAL DATA

Housing			Horizontal	Rising Pipe
Nominal diameter	DN	mm	20	20
Permanent flow rate	Q ₃	m ³ /h	4	4
R standard*	Q ₃ /Q ₁		160	160
Starting flow rate		l/h	0.6	0.6
Minimum flow rate*	Q ₁	l/h	25**	25**
Transitional flow rate*	Q ₂	l/h	40	40
Overload flow rate	Q ₄	m ³ /h	5	5
Head loss at Q ₃		bar	0.6	0.6
Kvs (deltaP=Q ² /Kvs ²)			4.69	4.69

* Other values on request

** Based on R 160

APPROVAL

ALTAIR MCI V5		
MID		LNE - 39018 Type A3
Standards		ISO 4064 EN 14154 OIML R49 UKCA
Dynamic range (Q ₃ /Q ₁)	R	40 80 160
Potable water		ACS AoC DEU Belgaqua PZH WRAS

REACH

Information pursuant to Article 33 (1) of Regulation (EC) No 1907/2006 of the European Parliament and of the Council of 18 December 2006:

This product series contains components with the following substances in a concentration of more than 0.1% weight by weight (w/w):

- Lead (CAS no.: 7439-92-1)

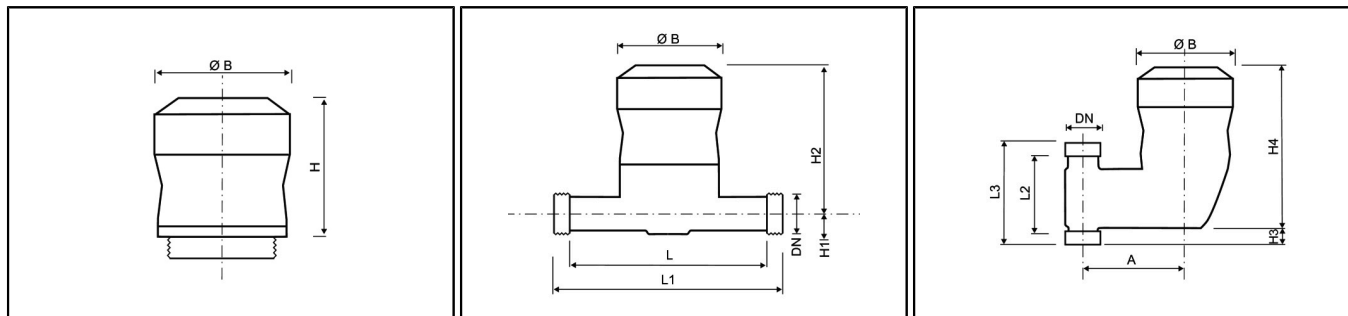
TEMPERATURE AND PRESSURE

ALTAIR MCI V5		
Water temperature	°C	0.1 ... +50
Ambient temperature	°C	+1 ... +55
Ambient storage temperature	°C	-10 ... +55
Nominal pressure	bar	16

ALTAIR MCI V5

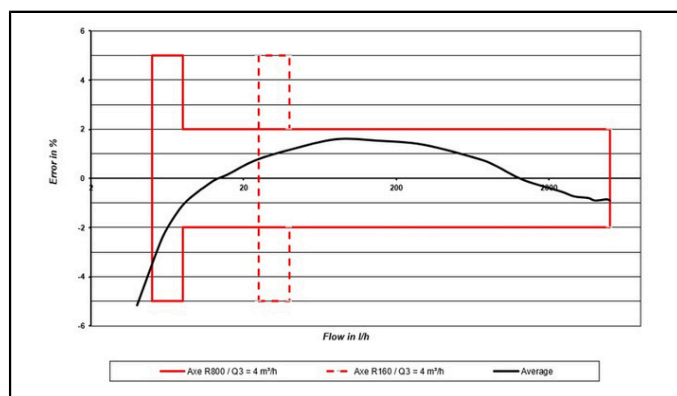
ROTARY PISTON METER

DIMENSIONS



Housing			Horizontal	Rising Pipe
Nominal diameter	DN	mm	20	20
Permanent flow rate	Q ₃	m ³ /h	4	4
Length	L	mm	160	-
Overall length (DIN ISO 4064)	L1	mm	190	-
Length	L2	mm	-	75
Overall length rising pipe with thread	L3	mm	-	105
Connection thread on meter		inch	G1B	G1B
Height	H	mm	94	94
Height	H1	mm	23	-
Height	H2	mm	141	-
Height	H3	mm	-	28
Height	H4	mm	-	169
Diameter	Ø B	mm	93	93
Width	A	mm	-	95
Weight of capsule		kg	0.37	0.37
Weight of complete meter (horizontal)		kg	1.33	-
Weight of complete meter (rising pipe)		kg	-	1.75

PRECISION CURVE



DN20 MCI

OPTIONS

Glass/metal copper register