

# ALTAIR MCI 119

ROTARY PISTON METER

**DIEHL**  
Metering



## APPLICATION

Domestic rotary piston water meter with measuring capsule

## FEATURES

- ▶ Low noise level
- ▶ System compatibility, with standard pulse output 1 l/pulse. ALTAIR MCI can be extended - with IZAR RADIO (radio module) or IZAR PULSE (pulse transmitter)
- ▶ Only the complete capsule needs to be replaced on expiry of the calibration period - the connection interface remains fitted in the pipeline
- ▶ Any mounting position + no calming sections necessary
- ▶ Low starting flow approximately 0.7 l/h permits recording of very small amounts of water
- ▶ Less exchange time as capsule and screw head is one part
- ▶ Self-cleaning mechanism of measuring chamber
- ▶ Encapsulated roller counter unit rotatable by 350°

# ALTAIR MCI 119

## ROTARY PISTON METER

### GENERAL

ALTAIR MCI 119		
Medium temperature range	°C	1 ... 30
Temperature safety	°C	1 ... 50
Ambient operating temperature	°C	1 ... 50
Ambient storage temperature	°C	1 ... 50
Nominal pressure	PN bar	16
Display range		8-digit, 0.001 l ... 99,999 m <sup>3</sup>
Pulse value	l/pulse	1
Protection class		IP 68

### TECHNICAL DATA

Housing			Horizontal	Rising Pipe
Nominal diameter	DN	mm	20	20
Permanent flow rate	Q <sub>3</sub>	m <sup>3</sup> /h	4	4
Overload flow rate	Q <sub>4</sub>	m <sup>3</sup> /h	5	5
Transitional flow rate	Q <sub>2</sub>	l/h	80	80
Minimum flow rate	Q <sub>1</sub>	l/h	25 <sup>1</sup>	25 <sup>1</sup>
Starting flow rate		l/h	0.7	0.7
Pressure loss at Q <sub>3</sub>		bar	0.6	0.6

<sup>1</sup> Based on R 160

### APPROVAL

ALTAIR MCI 119		
MID		LNE-6250   Type A2
Dynamic range (Q <sub>3</sub> /Q <sub>1</sub> )	R	40 / 80 / 160
Potable water		KTW / 270

### REACH

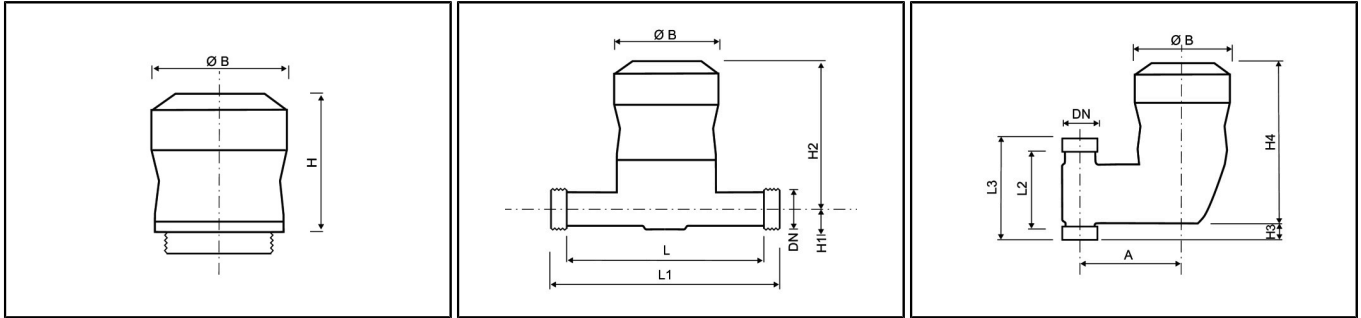
Information pursuant to Article 33 (1) of Regulation (EC) No 1907/2006 of the European Parliament and of the Council of 18 December 2006:

This product series contains components with the following substances in a concentration of more than 0.1% weight by weight (w/w):  
- Lead (CAS no.: 7439-92-1)

# ALTAIR MCI 119

## ROTARY PISTON METER

### DIMENSIONS



Housing			Horizontal	Rising Pipe
Length	L	mm	160	-
Overall length (DIN ISO 4064)	L1	mm	190	-
Length	L2	mm	-	75
Overall length rising pipe with thread	L3	mm	-	105
Connection thread on meter		Inch	G1B	G1B
Height	H	mm	97	97
Height	H1	mm	23	-
Height	H2	mm	144	-
Height	H3	mm	-	28
Height	H4	mm	-	172
Diameter	Ø B	mm	93	93
Width	A	mm	-	95
Weight of capsule		kg	0.57	0.57
Weight of complete meter (horizontal)		kg	1.53	-
Weight of complete meter (rising pipe)		kg	-	1.95

### PRESSURE LOSS (DELTA P = Q<sup>2</sup>/KVS<sup>2</sup>)

	ALTAIR MCI 119
Kvs	5.08

### SUSTAINABILITY:

An important aspect of our business is to reduce our impact on climate change, and we therefore strive to minimize our carbon footprint.

Carbon footprint for ALTAIR MCI: 4.28 kg CO<sub>2</sub> eq

These data are taken from the Life Cycle Assessment (LCA) that was conducted to evaluate the environmental effects of the product over its entire life cycle.

Please note that an Environmental Product Declaration (EPD) is available on the Customer Portal for the above mentioned version.

Want to know more? Please get in touch with your Sales Representative.