

ALTAIR MCI 119

Rotary Piston Meter

DIEHL
Metering



APPLICATION

Domestic rotary piston water meter with measuring capsule

FEATURES

- ▶ Low noise level
- ▶ System compatibility, with standard pulse output 1 l/pulse. ALTAIR MCI can be extended - with IZAR RADIO (radio module) or IZAR PULSE (pulse transmitter)
- ▶ Only the complete capsule needs to be replaced on expiry of the calibration period - the connection interface remains fitted in the pipeline
- ▶ Any mounting position + no calming sections necessary
- ▶ Low starting flow approximately 0.7 l/h permits recording of very small amounts of water
- ▶ Less exchange time as capsule and screw head is one part
- ▶ Self-cleaning mechanism of measuring chamber
- ▶ Encapsulated roller counter unit rotatable by 350°

ALTAIR MCI 119

Rotary Piston Meter

GENERAL

ALTAIR MCI 119			
Medium temperature range	°C	1 ... 30	
Temperature safety	°C	1 ... 50	
Ambient operating temperature	°C	1 ... 50	
Ambient storage temperature	°C	1 ... 50	
Nominal pressure	PN	bar	16
Display range	8-digit, 0.001 l ... 99,999 m ³		
Pulse value	l/pulse		1
Protection class	IP 68		

TECHNICAL DATA

Housing			Horizontal	Rising Pipe
Nominal diameter	DN	mm	20	20
Permanent flow rate	Q ₃	m ³ /h	4	4
Overload flow rate	Q ₄	m ³ /h	5	5
Transitional flow rate	Q ₂	l/h	80	80
Minimum flow rate	Q ₁	l/h	25 ¹	25 ¹
Starting flow rate	l/h		0.7	0.7
Pressure loss at Q ₃	bar		0.6	0.6

¹ Based on R 160

APPROVAL

ALTAIR MCI 119		
MID		LNE-6250 Type A2
Dynamic range (Q ₃ /Q ₁)	R	40 / 80 / 160
Potable water		AoC DEU

REACH

Information pursuant to Article 33 (1) of Regulation (EC) No 1907/2006 of the European Parliament and of the Council of 18 December 2006:

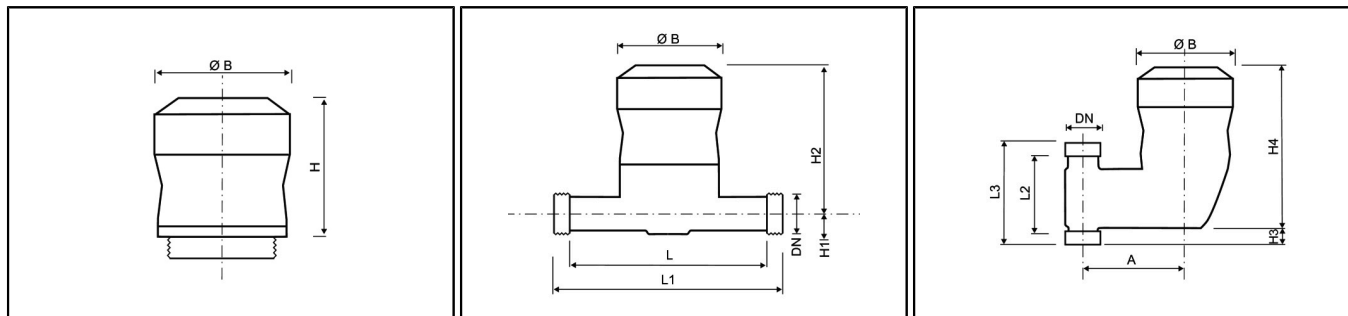
This product series contains components with the following substances in a concentration of more than 0.1% weight by weight (w/w):

- Lead (CAS no.: 7439-92-1)

ALTAIR MCI 119

Rotary Piston Meter

DIMENSIONS



Housing			Horizontal	Rising Pipe
Length	L	mm	160	-
Overall length (DIN ISO 4064)	L1	mm	190	-
Length	L2	mm	-	75
Overall length rising pipe with thread	L3	mm	-	105
Connection thread on meter	Inch		G1B	G1B
Height	H	mm	97	97
Height	H1	mm	23	-
Height	H2	mm	144	-
Height	H3	mm	-	28
Height	H4	mm	-	172
Diameter	Ø B	mm	93	93
Width	A	mm	-	95
Weight of capsule	kg		0.57	0.57
Weight of complete meter (horizontal)	kg		1.53	-
Weight of complete meter (rising pipe)	kg		-	1.95

PRESSURE LOSS ($\Delta P = Q^2/KVS^2$)

ALTAIR MCI 119	
Kvs	5.08