

HYDRUS (BR 171 A/B)
Remote Control Guide




Fig. A Remote control



General

- The remote control is used to activate the test mode with high-resolution volume display, and optical pulse output. It can be ordered under order number [3074045](#).
- The device is supplied complete with batteries already fitted. The remote control is therefore ready for immediate use.

General procedure

- Take the remote control and hold it so that the side marked "LED" points towards the optical interface of the meter (Fig. A/B).
- The maximum space between the remote control and the optical interface of the meter should be 5 centimeters.
- Press shortly the button  (Optical test pulses ON).
- The yellow "ACT" LED on the device (see Fig. C) glows to indicate that the remote control is in operation.

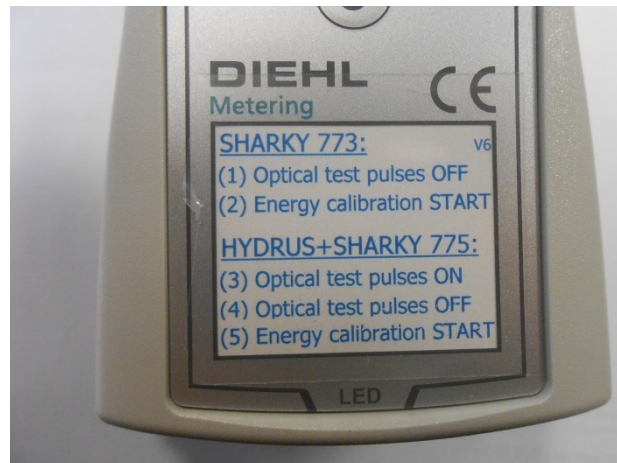


Fig. B Remote control



Fig. C "ACT" LED

HYDRUS

Performance of volume test

- Activate the test mode as described under General procedure.
- After activating the meter display alternately indicates "Out 4" and the high-resolution volume, e.g. 0.000000 m³ (Fig. D).

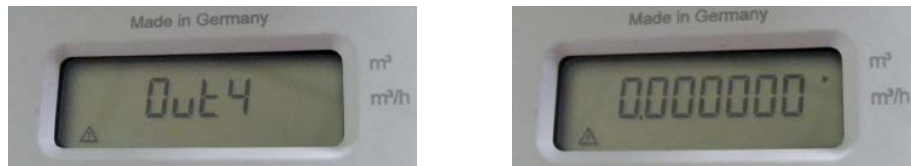




Fig. D Meter display with activated test mode

- HYDRUS now provides an output of the test pulse value for 3 hours shown in the display. The value depends on the nominal size of the meter (Fig. E).

TEST PULSE VALUES:

| Q3 | TEST PULSE VALUES | PULSE DURATION OPTOHEAD |
|-----|-------------------|-------------------------|
| 1.6 | 1 ml | 0.1 ms/pulse |
| 2.5 | 2 ml | 0.1 ms/pulse |
| 4 | 4 ml | 0.1 ms/pulse |
| 6.3 | 4 ml | 0.1 ms/pulse |
| 10 | 10 ml | 0.1 ms/pulse |
| 16 | 40 ml | 0.1 ms/pulse |
| 25 | 40 ml | 0.1 ms/pulse |

Fig. E Test pulse values

- To end the test, briefly press button  (*Optical test pulses OFF*) by holding the remote control via the optical interface.
- The yellow "ACT" LED on the device (see Fig. C) glows to indicate that the remote control is in operation.
- HYDRUS display no longer indicates "Out 4".
- To prevent accidental discharge of the battery, always end the test by pressing button  (*Optical test pulses OFF*) and check that "Out 4" is no longer indicated on the display of HYDRUS.

Replacing batteries in the remote control

- To replace the batteries, remove the two cross-head screws on the back of the device and take off the cover (Fig. F).
- The new batteries must be fitted with the correct polarity.
- 3 pieces of AAA batteries with a voltage of 1.5 VDC are required.



Fig. F Back of remote control