

Einbauanleitung

AQUARIUS S / RS / P

1. Allgemeines zur Einbauanleitung

Diese Einbauanleitung wendet sich an ausgebildetes Fachpersonal. Grundlegende Arbeitsschritte sind deshalb nicht aufgeführt.



Die Plombierung am Zähler darf nicht verletzt werden! Eine verletzte Plombierung hat das sofortige Erlöschen der Werksgarantie und der Eichung / Konformität zur Folge.



- Für den Einbau müssen die Anforderungen der EO6 / EN 14154 beachtet werden.
- Der Zähler darf nur in frostfreien Bereichen eingebaut werden.
- Darüber hinausgehende Regelwerke für Trinkwasser-Installationen (z. B. DIN 1988) separat beachten.
- Medium: Trinkwasser

2. Lieferumfang

- Basiszähler **AQUARIUS**
 - vorbereitet für die Nachrüstung mit Funksegment IZAR RS, oder
 - mit Impulsausgang, oder
 - komplett mit dem Funksegment IZAR RS
- 2 Flachdichtungen für die Verschraubung

3. Einbaustelle

- Alle Zapfstellen in einer Anlage erfassen.
- Zähler nicht in Zirkulationsleitungen montieren.
- Zähler an gut zugänglichen Stellen einbauen (Ablesung bzw. Austausch berücksichtigen).
- Für die Nachrüstung mit dem Funksegment IZAR RS wird eine zusätzliche Einbauhöhe von 20 mm benötigt.
- Zwischen dem Funksegment IZAR RS und elektromagnetischen Störquellen wie Schalter, Regler, Pumpen etc. einen Abstand von mind. 30 cm einhalten.

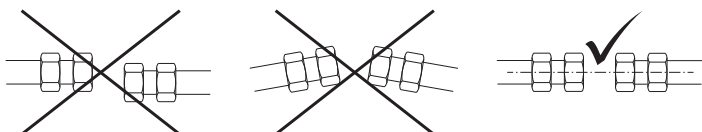
4. Montage

- Vor dem Zähler in die Zuleitung eine Absperrreinrichtung einbauen.
- Leitung gründlich spülen.
- Wasser absperren und die Rohrleitung entleeren.



Vorkehrungen treffen, damit eventuell an der Rohrleitung angeschlossene Geräte nicht beschädigt werden.

- 1/2" bzw. 3/4" Verschraubung verwenden. Bei Bedarf Reduziermuffen verwenden.
- Zähler gegen Stöße oder Vibrationen, die in der Einbaustelle entstehen könnten, schützen.
- Zähler vor Spannungen oder Kräften die von Rohren oder Formstücken verursacht werden (z. B. Versatz, Fluchtlinie) schützen, ggf. Anschlussbügel verwenden.



- Alte Dichtungen entfernen und Dichtflächen reinigen - nur die beiliegenden Dichtungen verwenden!
- Zähler montieren - Durchflussrichtung (Durchflusspfeil am Zähler) und Mediumtemperaturbereich beachten!
- Bei Zählern mit **Kunststoffgehäuse** darf das maximale Anzugsdrehmoment von **15 - 25 Nm** nicht überschritten werden, andernfalls besteht die Gefahr dass der Zähler beschädigt wird.
- Zapfstelle öffnen.

- Absperrreinrichtung vor dem Zähler **langsam** öffnen, um den Messeinsatz nicht zu beschädigen.
- Funktion prüfen.
- Zählwerk in eine leicht ablesbare Position drehen.
- Zapfstelle schließen und Anlage auf Dichtheit prüfen.
- Anschlussverschraubung plombieren.
- Eventuell angeschlossene Geräte wieder einschalten.



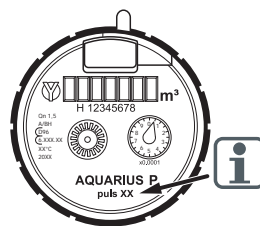
Zähler mit Kunststoffgehäuse dürfen nicht für Zapfhahn-Anschlüsse verwendet werden!

Zusätzliche Montagehinweise für Zapfhahn-Anschluss (z. B. Waschmaschine; Gartenschlauch usw.)

- Anschlussverschraubung mit Dichtung am Einlauf des Zählers schrauben.
- Schlauchverschraubung oder Waschmaschinenanschluss mit Dichtung am Auslauf des Zählers schrauben.

Dabei unbedingt die Durchflussrichtung (Durchflusspfeil am Zähler) beachten!

5. AQUARIUS Impulsausgang




Impulswertigkeit des Zählers beachten!
Es gibt zwei Ausführungen:

- Pulswertigkeit 10 L/Impuls
- Pulswertigkeit 100 L/Impuls

Kontaktbelastung:
max. 24 V ~ 0,2 A



Der **AQUARIUS**  mit Pulsausgang ist nur „nicht konformitätserklärt“ verfügbar.

6. Transport und Lagerung



Auf frostfreie Lagerung achten!
Wassermessgeräte sind Präzisionsgeräte - vor Stößen und Erschütterungen schützen!



Bei Versand von Messgeräten / Komponenten mit Funk per Luftfracht ist der Funk vor dem Versand zu deaktivieren.

7. Umwelthinweis

Das Gerät darf nicht mit dem Hausmüll entsorgt werden. Senden Sie es zum Recycling an den Hersteller zurück.

8. EG Konformitätserklärung

Hiermit erklärt Diehl Metering, dass der Funkanagentyp IZAR RADIO SEGMENT der Richtlinie 2014/53/EU entspricht.

Der vollständige Text der EU-Konformitätserklärung ist unter der folgenden Internetadresse verfügbar:

<https://www.diehl.com/metering/de/support-center/download-center/>

Diese Anleitung
ist dem Endkunden
auszuhändigen.
This guide must be
given to the end
consumer.

Diehl Metering GmbH

Industriestrasse 13

91522 Ansbach

Phone: +49 981 1806-0

Fax: +49 981 1806-615

www.diehl.com/metering



Installation Guide AQUARIUS S / RS / P

1. General information on the installation guide

This installation guide is intended for trained personnel. For this reason no basic working steps are included.

! The seal on the meter must not be damaged! A damaged seal will result in immediate invalidation of the factory warranty and verification / conformity.

- !** For installation, please observe the requirements in EO6 / EN 14154.
- The meter must only be installed in areas free from the risk of frost.
- Please also observe any additional regulations for potable water installations (e.g. DIN 1988).
- Medium: potable water

2. Scope of supply

- Base meter **AQUARIUS**
 - prepared for retrofitting with radio segment IZAR RS
 - or with pulse output
 - or complete with radio segment IZAR RS
- 2 flat gaskets for the screw connection

3. Installation location

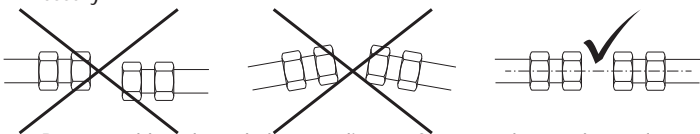
- Capture all outlets in one system.
- Do not install meters in circulation conduits.
- Install meters at easily accessible points (take read-outs or replacement into consideration).
- Retrofitting with the radio segment IZAR RS requires an additional installation height of 20 mm.
- Maintain a minimum distance of 30 cm between the radio segment IZAR RS and electromagnetic sources of interference such as switches, regulators, pumps, etc.

4. Assembly

- Install a closing device to the conduit in front of the meter.
- Rinse the conduit thoroughly.
- Shut off the water supply and empty the pipeline.

! Take necessary precautions to ensure that any devices connected to the pipeline are not damaged.

- Use 1/2 or 3/4 inch screw connections. Use a reducing sleeve if necessary.
- Protect meters against impacts, shocks or vibrations which could arise at the installation location.
- Protect meters against stress or forces which could be caused by pipes or fittings (e.g. offset, alignment) and use connecting brackets if necessary.



- Remove old seals and clean sealing surfaces - only use the seals provided!
- Install meter- observe the flow direction (arrow indicating the flow on the meter) and medium temperature range!
- For meters with **plastic housing**, do not exceed the maximum torque of **15 - 25 Nm**, as otherwise the meter may be damaged.
- Open outlet.
- Open the closing device in front of the meter **slowly** to prevent any damage to the measurement insert.
- Check function.
- Turn the register to an easy-to-read position.
- Close the outlet and check the system for leaks.
- Seal the connection fitting.
- Reactivate any previously connected devices.

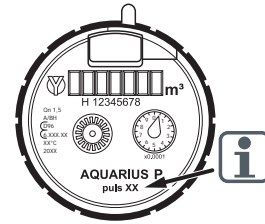
! Meters with plastic housing must not be used for tap connections!

Additional installation instructions for tap connections (e.g. washing machine, garden hose, etc.)

- Screw the connection fitting with seal to the meter inlet.
- Screw the hose or washing machine connection and seal to the outlet of the meter.

Important: observe the flow direction (arrow indicating the flow on the meter)!

5. AQUARIUS pulse output



Observe the pulse value of the meter!
There are two versions:

- Pulse value 10 l/pulse
- Pulse value 100 l/pulse

Contact load:
max. 24 V ~ 0.2 A

! The **AQUARIUS** with pulse output is only available „not in conformity with the declaration“.

6. Transport and storage

! Ensure frost-free storage!
Water measurement devices are precision devices and must be protected from impact, shock and vibration!

i When sending wireless measuring instruments / components by air, deactivate the wireless before shipping.

7. Environmental note

The device must not be disposed together with the domestic waste. Return it to the manufacturer for recycling.

8. EC Declaration of conformity

Hereby, Diehl Metering declares that the radio equipment type IZAR RADIO SEGMENT is in compliance with Directive 2014/53/EU.

The full text of the EU declaration of conformity is available at the following internet address:

<https://www.diehl.com/metering/en/support-center/download-center/>

DIEHL Metering

1. IZAR RADIO SEGMENT is a radio equipment (radio) within the meaning of Article 2, point 1, of Directive 2014/53/EU of the European Parliament and of the Council of 16 April 2014 on the harmonisation of the laws, regulations, administrative provisions and standards of the Member States relating to radio equipment and the mutual recognition of their CE marking.

2. The radio equipment is intended for use in the following countries: Austria, Belgium, Bulgaria, Czechia, Denmark, Germany, Estonia, Finland, France, Greece, Hungary, Ireland, Italy, Latvia, Lithuania, Luxembourg, Malta, Netherlands, Poland, Portugal, Romania, Slovakia, Slovenia, Spain, Sweden, Switzerland, United Kingdom, and the Republic of Ireland.

3. The radio equipment is intended for use in the following frequency bands: 433 MHz, 868 MHz, and 915 MHz.

4. The radio equipment is intended for use in the following power classes: Class 1 and Class 2.

5. The radio equipment is intended for use in the following modes: GFSK, OQPSK, and BPSK.

6. The radio equipment is intended for use in the following channels: 125 kHz and 170 kHz.

7. The radio equipment is intended for use in the following countries: Austria, Belgium, Bulgaria, Czechia, Denmark, Germany, Estonia, Finland, France, Greece, Hungary, Ireland, Italy, Latvia, Lithuania, Luxembourg, Malta, Netherlands, Poland, Portugal, Romania, Slovakia, Slovenia, Spain, Sweden, Switzerland, United Kingdom, and the Republic of Ireland.

8. The radio equipment is intended for use in the following countries: Austria, Belgium, Bulgaria, Czechia, Denmark, Germany, Estonia, Finland, France, Greece, Hungary, Ireland, Italy, Latvia, Lithuania, Luxembourg, Malta, Netherlands, Poland, Portugal, Romania, Slovakia, Slovenia, Spain, Sweden, Switzerland, United Kingdom, and the Republic of Ireland.

9. The radio equipment is intended for use in the following countries: Austria, Belgium, Bulgaria, Czechia, Denmark, Germany, Estonia, Finland, France, Greece, Hungary, Ireland, Italy, Latvia, Lithuania, Luxembourg, Malta, Netherlands, Poland, Portugal, Romania, Slovakia, Slovenia, Spain, Sweden, Switzerland, United Kingdom, and the Republic of Ireland.

10. The radio equipment is intended for use in the following countries: Austria, Belgium, Bulgaria, Czechia, Denmark, Germany, Estonia, Finland, France, Greece, Hungary, Ireland, Italy, Latvia, Lithuania, Luxembourg, Malta, Netherlands, Poland, Portugal, Romania, Slovakia, Slovenia, Spain, Sweden, Switzerland, United Kingdom, and the Republic of Ireland.

EU DOC_ET 1234_REV1 - 06/2021

DIEHL Metering

DECLARATION OF CONFORMITY

1. IZAR RADIO SEGMENT is a radio equipment (radio) within the meaning of Article 2, point 1, of Directive 2014/53/EU of the European Parliament and of the Council of 16 April 2014 on the harmonisation of the laws, regulations, administrative provisions and standards of the Member States relating to radio equipment and the mutual recognition of their CE marking.

2. The radio equipment is intended for use in the following countries: Austria, Belgium, Bulgaria, Czechia, Denmark, Germany, Estonia, Finland, France, Greece, Hungary, Ireland, Italy, Latvia, Lithuania, Luxembourg, Malta, Netherlands, Poland, Portugal, Romania, Slovakia, Slovenia, Spain, Sweden, Switzerland, United Kingdom, and the Republic of Ireland.

3. The radio equipment is intended for use in the following frequency bands: 433 MHz, 868 MHz, and 915 MHz.

4. The radio equipment is intended for use in the following power classes: Class 1 and Class 2.

5. The radio equipment is intended for use in the following modes: GFSK, OQPSK, and BPSK.

6. The radio equipment is intended for use in the following channels: 125 kHz and 170 kHz.

7. The radio equipment is intended for use in the following countries: Austria, Belgium, Bulgaria, Czechia, Denmark, Germany, Estonia, Finland, France, Greece, Hungary, Ireland, Italy, Latvia, Lithuania, Luxembourg, Malta, Netherlands, Poland, Portugal, Romania, Slovakia, Slovenia, Spain, Sweden, Switzerland, United Kingdom, and the Republic of Ireland.

8. The radio equipment is intended for use in the following countries: Austria, Belgium, Bulgaria, Czechia, Denmark, Germany, Estonia, Finland, France, Greece, Hungary, Ireland, Italy, Latvia, Lithuania, Luxembourg, Malta, Netherlands, Poland, Portugal, Romania, Slovakia, Slovenia, Spain, Sweden, Switzerland, United Kingdom, and the Republic of Ireland.

9. The radio equipment is intended for use in the following countries: Austria, Belgium, Bulgaria, Czechia, Denmark, Germany, Estonia, Finland, France, Greece, Hungary, Ireland, Italy, Latvia, Lithuania, Luxembourg, Malta, Netherlands, Poland, Portugal, Romania, Slovakia, Slovenia, Spain, Sweden, Switzerland, United Kingdom, and the Republic of Ireland.

10. The radio equipment is intended for use in the following countries: Austria, Belgium, Bulgaria, Czechia, Denmark, Germany, Estonia, Finland, France, Greece, Hungary, Ireland, Italy, Latvia, Lithuania, Luxembourg, Malta, Netherlands, Poland, Portugal, Romania, Slovakia, Slovenia, Spain, Sweden, Switzerland, United Kingdom, and the Republic of Ireland.

EU DOC_ET 1234_REV1 - 06/2021

Technische Änderungen vorbehalten • Technical changes reserved

Mat.-Nr. 3054112 • 23/6/2021