

Plug 'n' Stow Module (PSM)

Additional storage for flexible use within the galley area

DIEHL
Aviation

Climbing higher.
Together.



Characteristics

Ovens are often not used on short-haul flights while hand stowage is limited in aircraft cabins. The newly-developed, cost-efficient Plug 'n' Stow Module is a simple drop-in replacement for any standard ATLAS inserts (oven, fridge, etc.). The module extends on-board storage space and frees up overhead bins for passenger luggage by moving emergency equipment, crew luggage, or other items into the additional space created in the galley. The module is fully retrofit-enabled as no modifications are required and supports flexibility in different catering service approaches.

Benefits

- Extends stowage capability within the aircraft cabin
- Frees up overhead bins for passenger luggage
- Cabin crew has direct access to equipment or their luggage
- Reduces weight
- Highly configurable module
- Easy installation in a standard ATLAS insert compartment
- Quick-swap: Insert removal and PSM installation in less than 15 minutes
- No galley modification needed – suitable for all galleys/fleets
- Charging option via USB flash drive

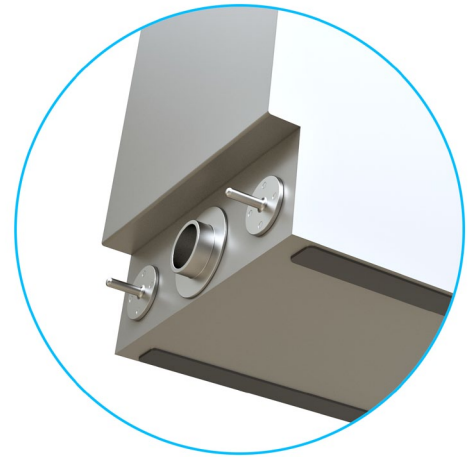
Plug 'n' Stow Module (PSM)

Additional storage for flexible use within the galley area

Technical Data

- Simple plug & play solution
- Integrated into standard ATLAS insert compartments
- Uses the mechanical attachments of the galley
- Uses the power interfaces of the galley
- Fits into all galleys across all fleets
- Highly configurable module:
 - Fixed shelf
 - Foldable shelf
 - One or two lockable doors
 - Electrical interface for charging/operating electronics equipment

Standardized interfaces
allow flexible installation



Easy exchange of modules within less than 15 minutes

Want to know more about our products and their availability? Please contact us!

Diehl Aviation | Sales | Hein-Sass-Weg 41 | 21129 Hamburg | Germany | Tel: +49 40 74 314-0

www.diehl.com/aviation