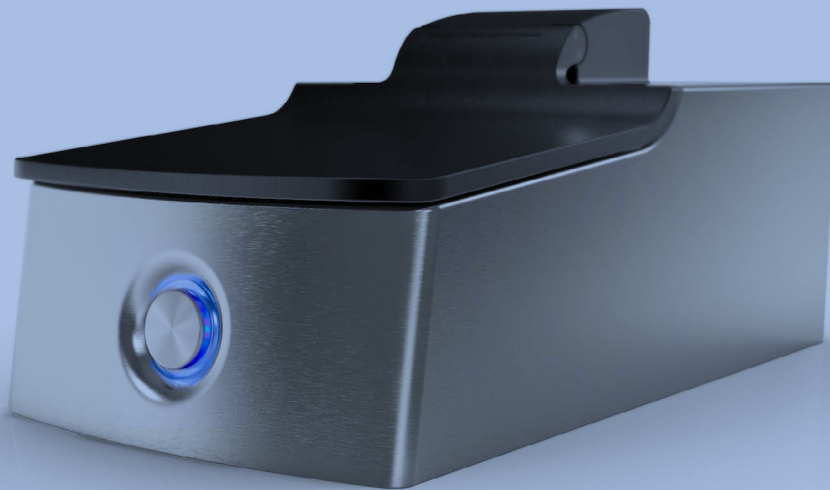


## Aerosol-GWDU

Serves aircraft cabin aesthetics through successfully turning a waste disposal unit into an industrial design feature of modern aircraft galleys.



### Characteristics

Since 1997 Galley Waste Disposal Units of various suppliers enable the disposal of small – partly liquid – galley waste directly into the aircraft's waste tanks.

But the innovative GWDU6978 is utilizing an innovative aerosol-air vectoring injection system and a specific industrial design approach featuring a one-box architecture with brushed metal surfaces and a one button user interface with a multi-colored light ring providing status feedback. This unit is available for A350XWB and B777X.

### Benefits

- innovative aerosol-air vectoring injection system provides a substantially increased flushing efficiency;
- hence saving amounts of rinsing water (and thus weight) with each individual flush;
- new industrial design approach turns a galley task support equipment formerly rather neglected or hidden in the galley's industrial design into an eyecatcher for both cabin staff and passengers alike.

# Aerosol-GWDU

Serves aircraft cabin aesthetics through successfully turning a waste disposal unit into an industrial design feature of modern aircraft galleys.

## Technical Data

External Dimensions	
Width	265 mm
Height	215 mm (Cover closed)
Height	457 mm (Cover opened)
Length	500 mm

Bowl Capacity
1,8 Liters

Weight
8,7 kg

**Want to know more about our products and their availability? Please contact us!**

Diehl Aviation | Sales | Friedrichshafener Str. 5 | 82205 Gilching | Germany | Tel: +49 8105 210-0

**[www.diehl.com/aviation](http://www.diehl.com/aviation)**