

CORONA C

Multi-Jet Meter | Wet Runner

DIEHL
Metering



APPLICATION

CORONA C is a main meter designed for metering cold water. It is available in different lengths and standardised diameters.

CORONA C has a R=160 MID approval for horizontal installation.

Thanks to the direct transmission through the stuffing-box, the meter is particularly reliable and sensitive to low flowrates.

CORONA C is fitted with a register with protected 5-digit roller counter which remains optimally readable in all environments.

FEATURES

- ▶ Multijet meter
- ▶ MID approval up to R=160
- ▶ Good starting flowrate
- ▶ Insensitive to tamper
- ▶ DN 15 to 40
- ▶ Protected 5-digit roller counter

CORONA C

Multi-Jet Meter | Wet Runner

METROLOGICAL DATA

Nominal diameter	DN	mm	15	20	25	30	40
Length	L	mm	165/170	190	260	260	300
Nominal flowrate	Q ₃	m ³ /h	2.5	4	6.3	10	16
Dynamic	R		160	160	160	160	160
Start flowrate		l/h	3.5	3.5	10	10	20
Min. flowrate	Q ₁	l/h	15.6	25	39	62.5	100
Transition flowrate	Q ₂	l/h	24.9	40	62.4	100	160
Max. flowrate	Q ₄	m ³ /h	3.125	5	7.8	12.5	20

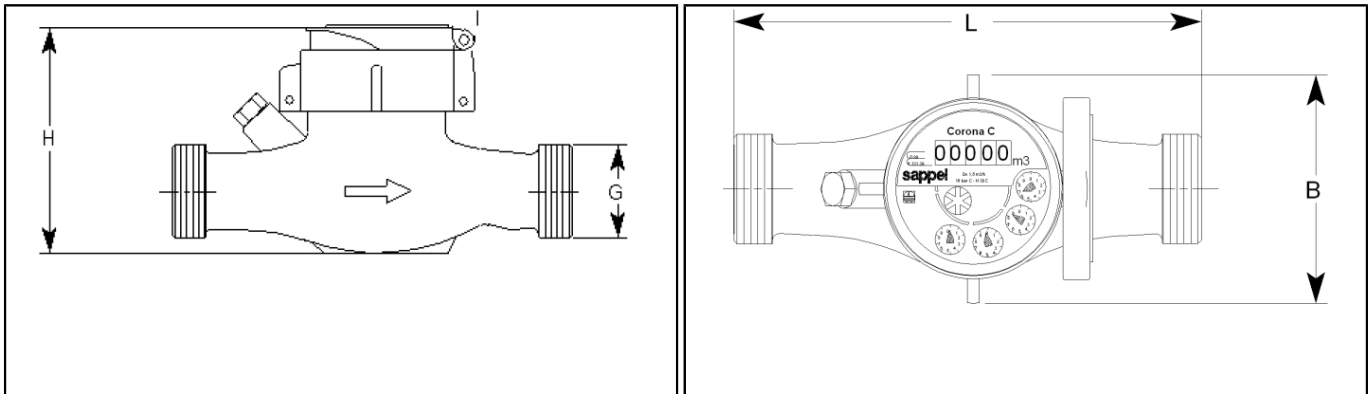
TEMPERATURE AND PRESSURE

CORONA C		
Medium temperature range	°C	up to +50
Nominal pressure	bar	16

APPROVAL

CORONA C	
MID approval	CH-MI001-11045-05

DIMENSIONS

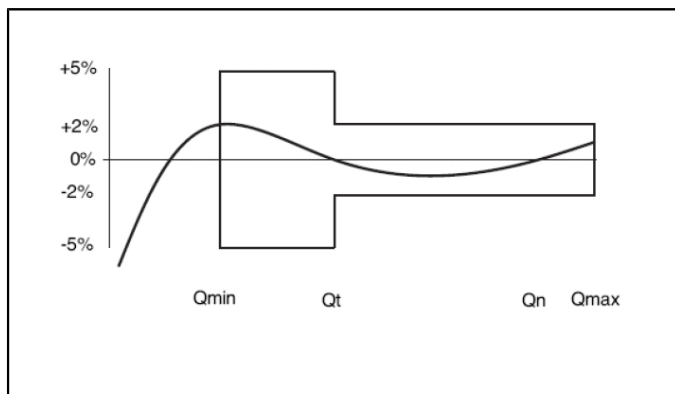


Nominal diameter	DN	mm	15	20	25	30	40
Length	L	mm	165/170	190	260	260	300
Width	B	mm	96	96	100	100	136
Height	H	mm	105	105	120	120	130
Weight		kg	1.6	1.75	2.15	2.45	3.70
Thread connections	G	inch	3/4"	1"	1-1/4"	1-1/2"	2"

CORONA C

Multi-Jet Meter | Wet Runner

PRECISION CURVE



HEAD LOSS

Nominal diameter	DN	mm	15	20	25	30	40
Length	L	mm	165/170	190	260	260	300
kvs ($\Delta P = Q^2 / Kvs^2$)			3	5	7	10	20