

# CORONA P 423/424

Multi-Jet Meter | Wet Runner

**DIEHL**  
Metering



## APPLICATION

Multi-jet impeller meter with pulse output contact for control, metering or remote display of flow rate

## FEATURES

- ▶ Especially low head loss and extended measuring range
- ▶ Records very small amounts of water consumption
- ▶ Withstands high load for short time periods
- ▶ Maximum long-term accuracy
- ▶ Forward and return metering
- ▶ Strainer insert in inlet connection for cleaning without damaging the seal
- ▶ Measuring data better than specified by calibration regulations
- ▶ Easily replaceable pulse contact
- ▶ Pulse contact with screw connection (standard version) or cable 2 m
- ▶ Max. contact load 24 V (SELV) 0.2 A

# CORONA P 423/424 Meter for horizontal pipes 423

Multi-Jet Meter | Wet Runner

## GENERAL

Meter for horizontal pipes 423		
Medium temperature range	°C	0 ... 30
Temperature safety	°C	0 ... 50
Ambient operating temperature	°C	0 ... 55
Ambient storage temperature	°C	0 ... 55
Nominal pressure	PN bar	10
Display range		0.05 l ... 99,999 m <sup>3</sup>
Pulse value	l/pulse	0.1 (only at Q <sub>n</sub> 2.5) / 0.25 / 0.5 / 1 / 2 / 2.5 / 3 / 4 / 5 / 10 / 100 ... 1000
Protection class		IP 68 (IP 65 with pulse contact and cable)

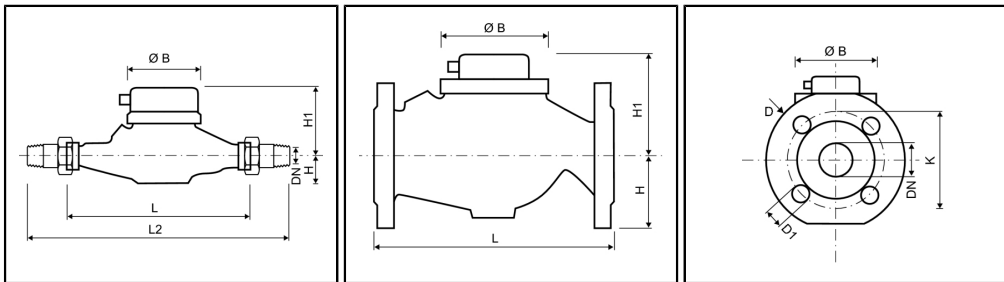
## TECHNICAL DATA

Nominal diameter	DN	mm	20	25	40	50
Nominal flow rate	Q <sub>n</sub>	m <sup>3</sup> /h	2.5	6	10	15
Maximum flow rate (short-term)	Q <sub>max</sub>	m <sup>3</sup> /h	5	12	20	30
Transition flow rate	Q <sub>t</sub>	l/h	250	500	1000	1500
Minimum flow rate	Q <sub>min</sub>	l/h	30	70	100	100
Starting flow rate		l/h	4-6	6-8	20-25	25-30
Flow rate at 1 bar pressure loss		m <sup>3</sup> /h	7	12	24	34

## APPROVAL

Nominal diameter	DN	mm	20	25	40	50
EC			D 82 / 6.131.43	D 98 / 6.131.04	D 98 / 6.131.04	D 82 / 6.131.43
Metrological class			A/B/C	A/B	A/B	A/B

## DIMENSIONS

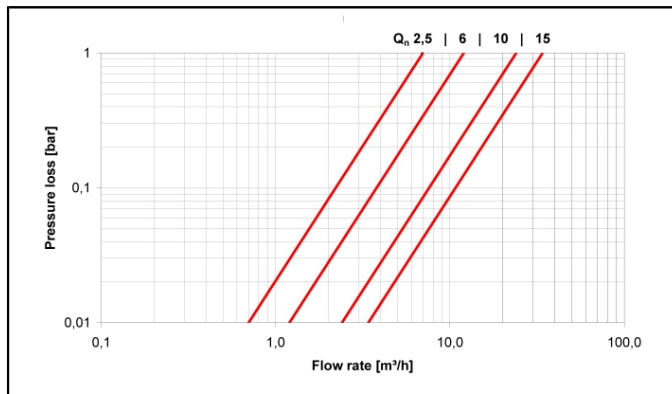


Nominal diameter	DN	mm	20	25	40	50
Overall length (DIN ISO 4064)	L	mm	190	260	300	270
Overall length with coupling	L2	mm	288	378	438	-
Connection thread on meter (ISO 228/1)		Inch	G1B	G1¼B	G2B	-
Connection thread of coupling (DIN 2999)		Inch	R¾	R1	R1½	-
Flange diameter (DIN 2501)	D	mm	-	-	-	165
Hole circle diameter (DIN 2501)	K	mm	-	-	-	125
Number of screwholes		pcs	-	-	-	4
Screwhole diameter	D1	mm	-	-	-	18
Height	H	mm	41	44	58	83
Height	H1	mm	110	115	133	150
Diameter	Ø B	mm	96	104	136	165
Weight without coupling		kg	1.8	2.8	5.4	12.4
Weight with coupling		kg	2.2	3.4	6.6	-

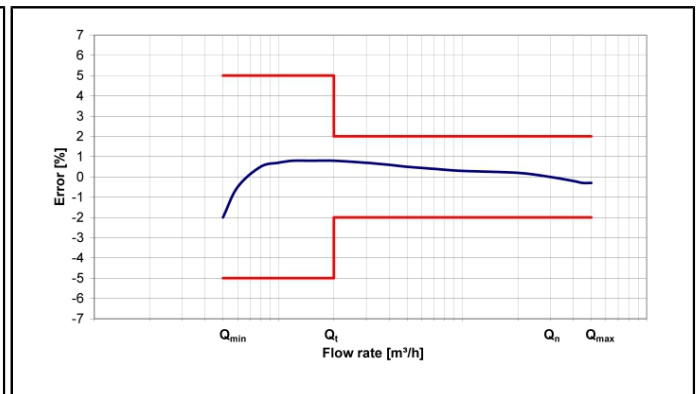
# CORONA P 423/424 Meter for horizontal pipes 423

Multi-Jet Meter | Wet Runner

## PRESSURE LOSS GRAPH / TYPICAL ERROR GRAPH



Pressure loss graph



Typical error graph

# CORONA P 423/424 Meter for rising pipes 424

Multi-Jet Meter | Wet Runner

## GENERAL

Meter for rising pipes 424		
Medium temperature range	°C	0 ... 30
Temperature safety	°C	0 ... 50
Ambient operating temperature	°C	0 ... 55
Ambient storage temperature	°C	0 ... 55
Nominal pressure	PN bar	10
Display range		0.05 l ... 99,999 m <sup>3</sup>
Pulse value	l/pulse	0.1 (only at Q <sub>n</sub> 2.5) / 0.25 / 0.5 / 1 / 2 / 2.5 / 3 / 4 / 5 / 10 / 100 ... 1000
Protection class		IP 68 (IP 65 with pulse contact and cable)

## TECHNICAL DATA

Nominal diameter	DN	mm	20	25	40
Nominal flow rate	Q <sub>n</sub>	m <sup>3</sup> /h	2.5	6	10
Maximum flow rate (short-term)	Q <sub>max</sub>	m <sup>3</sup> /h	5	12	20
Transition flow rate	Q <sub>t</sub>	l/h	250	500	1000
Minimum flow rate	Q <sub>min</sub>	l/h	30	40	100
Starting flow rate		l/h	4-6	6-8	20-25
Flow rate at 1 bar pressure loss		m <sup>3</sup> /h	6	12	22

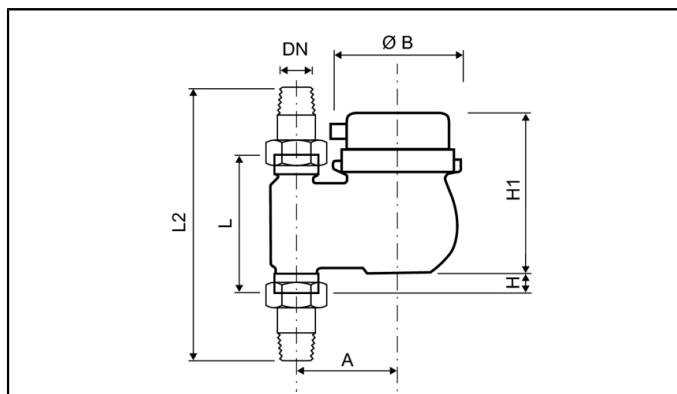
## APPROVAL

Nominal diameter	DN	mm	20	25	40
EC			D 82 / 6.131.43	D 98 / 6.131.04	D 98 / 6.131.04
Metrological class			A/B/C	A/B	A/B

# CORONA P 423/424 Meter for rising pipes 424

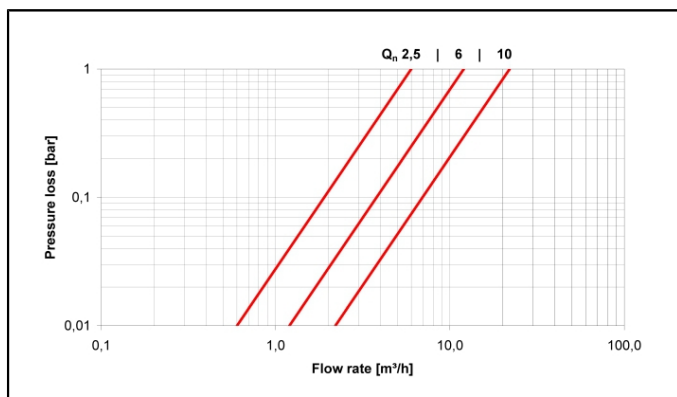
Multi-Jet Meter | Wet Runner

## DIMENSIONS

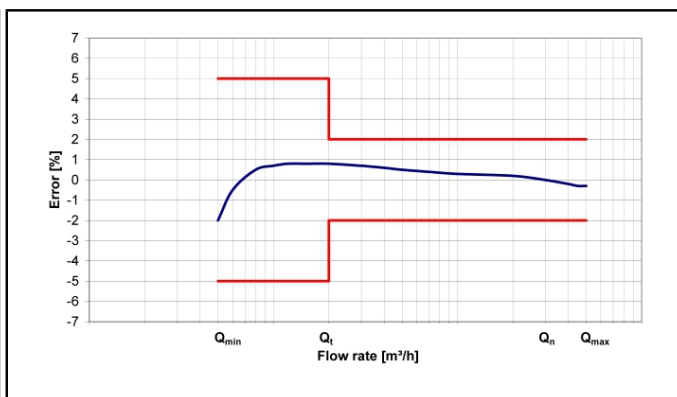


Nominal diameter	DN	mm	20	25	40
Overall length (DIN ISO 4064)	L	mm	105	150	200
Overall length with coupling	L2	mm	203	268	338
Connection thread on meter (ISO 228/1)		Inch	G1B	G1¼B	G2B
Connection thread of coupling (DIN 2999)		Inch	R¾	R1	R1½
Height	H	mm	148	165	195
Height	H1	mm	15	22	45
Diameter	Ø B	mm	96	104	136
Width	A	mm	82	95	120
Weight without coupling		kg	1.9	3.2	6.3
Weight with coupling		kg	2.3	3.8	7.5

## PRESSURE LOSS GRAPH / TYPICAL ERROR GRAPH



Pressure loss graph



Typical error graph