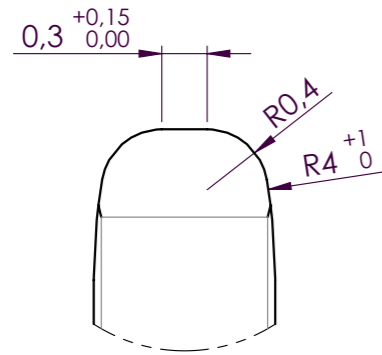
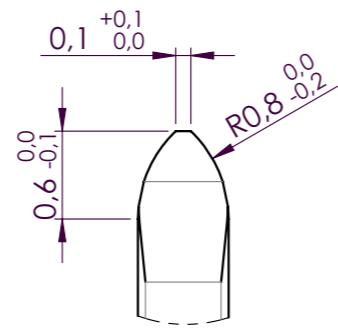


A (20 : 1)



B (20 : 1)



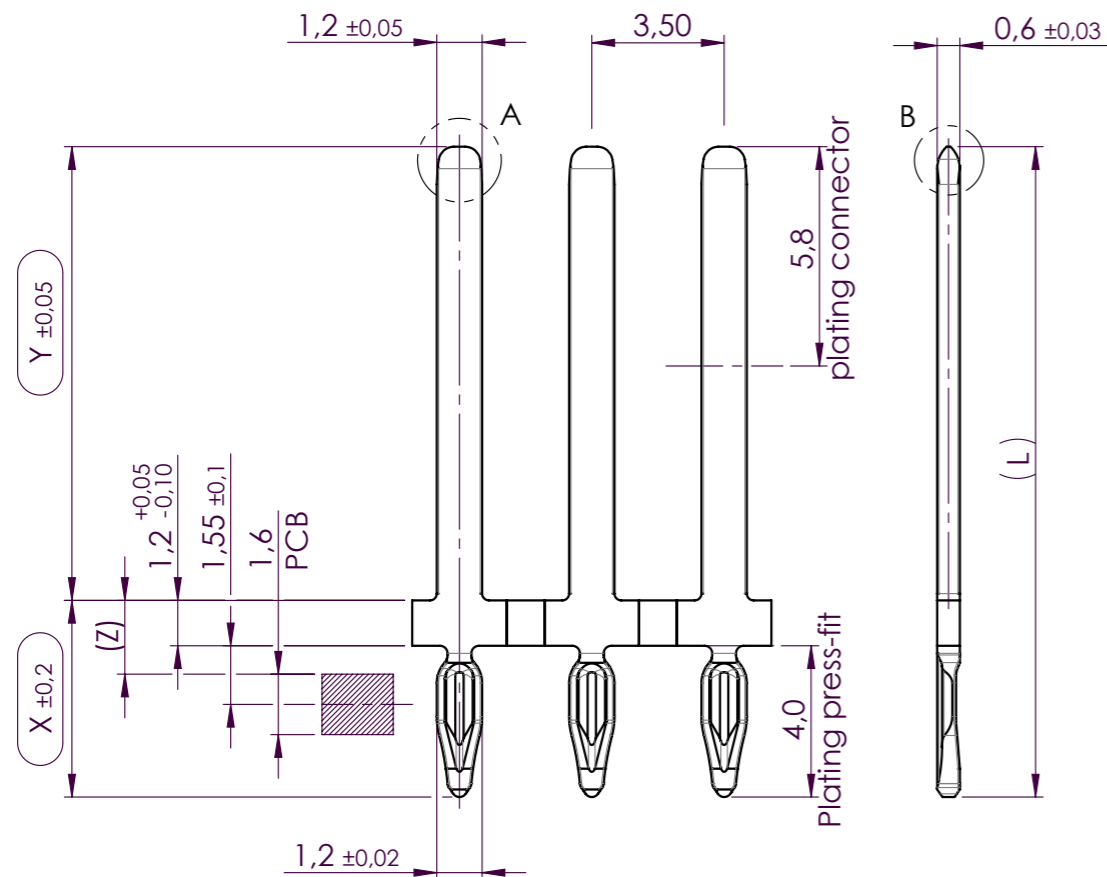
| Dimension "X±0,2" | Dimension "Y±0,05" | Dimension "Z" | Dimension "L" |
|-------------------|--------------------|---------------|---------------|
| 5,2 | 10,5 | 1,95 | 15,7 |
| 5,2 | 11,5 | 1,95 | 16,7 |
| 5,2 | 16 | 1,95 | 21,2 |

| Plating variants |
|--|
| Press-fit zone |
| Ni 1 - 3µm, Sn mt 0,3 - 1,1µm |
| Ni 1 - 3µm, Adv. Indium 0,3 - 1,1µm |
| Ni 1,3 - 2,2µm, Adv. AgSn 0,35 - 0,75µm |

| Connector side |
|--------------------------------------|
| Ni 1,0 - 2,2µm, Sn mt 1 - 3µm |
| Ni 1,0 - 3,0µm, Ag 1,5 - 5,0µm *2 |
| Ni 1,0 - 2,2µm, Au 0,8 - 2,0µm *1 |

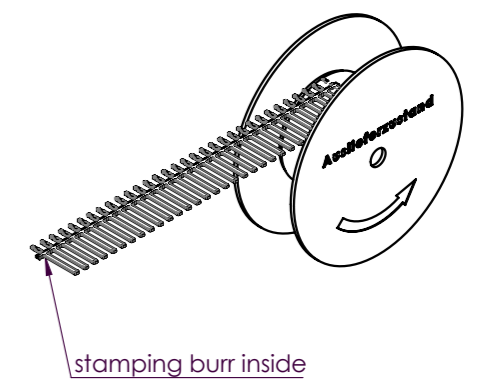
*1 (AuCo - alloy (hard gold) with 0,2 - 0,3%Co)

*2 (fine silver with 75 - 95HV and Thiol passivation) ①



- Press-fit zone according to DMA-drawing 80990
- Product drawing 80948

Delivery condition



| | | | | |
|----------------------------|------------------------------|--|---|--|
| Erstellt in: SOLIDWORKS | Toleranzen DIN ISO 2768-m | Maßstab 5:1 | Material CuNiSi (C70250) R620 | Pos. Nr. |
| | | nicht bemaßte Konturen siehe 3D-Datensatz | Benennung Marketingzeichnung DMA-Katalog | Stk. |
| | | Datum 08.09.2020 | Name Krause | Kontaktstift 1,2 x 0,6 Contact Pin 1,2 x 0,6 |
| | | Gepr | | |
| | | Norm | | |
| | | Zeichn.-Nr 80997-01 | | Blatt-Nr. |
| 01 | "Thiol passivation" hinzu | 18.01.2023 | Krause | Auftr.-Nr A3 |
| Zust | Änderung | Datum | Name | |

Schutzvermerk nach DIN 34 / ISO 16016 beachten

Pfad (Zeichnung): \\dmatfil01\CAD\CAD\cadda\DMA-Katalogware\08_Artikel - Spezifikation\Marketingzeichnungen\80997_1,2 x 0,6\80997-01_1,2 x 0,6