



DIEHL
Metal Applications

**INTELLIGENT
E-SOLUTIONS**

WE CONNECT METAL.

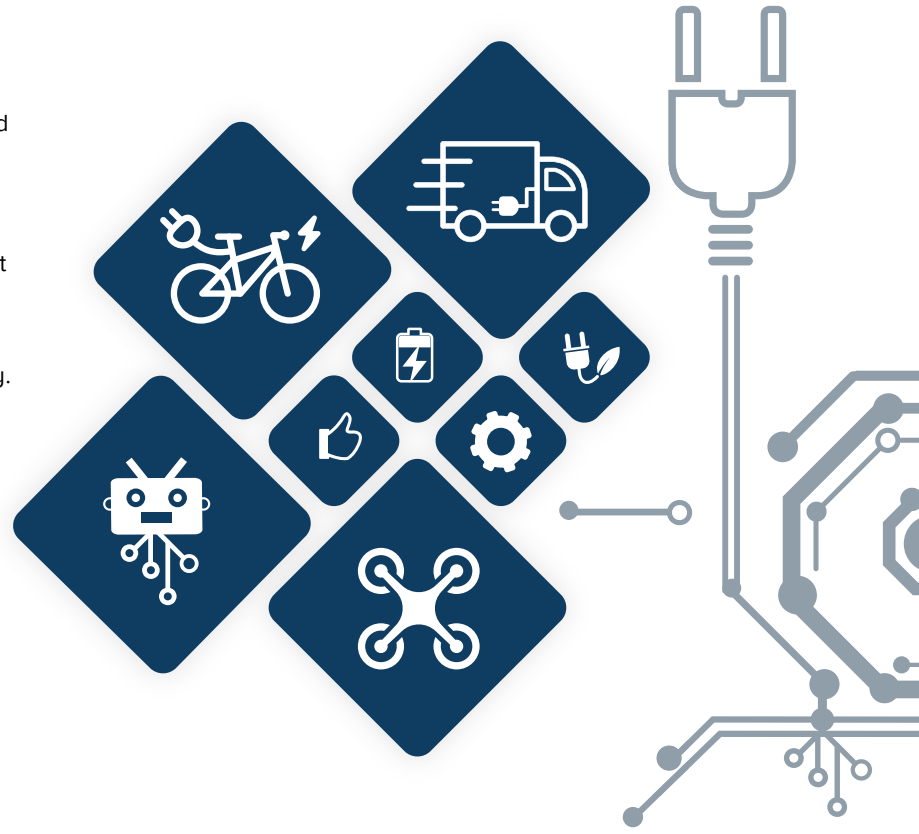
WE SHAPE TOMORROW'S WORLD

Dynamic ways of keeping people moving without neglecting the environment represents the biggest challenge of the future. In addition to **mobility**, the global market for **cognitive technologies** is also changing and constantly growing.

In these market fields, Diehl Metal Applications is not only specialized in innovative manufacturing concepts, but also in precisely engineered, highly sophisticated technological solutions.

We have been a professional partner to the international automotive industry for decades, and are well positioned to adapt our existing products and technologies to future requirements.

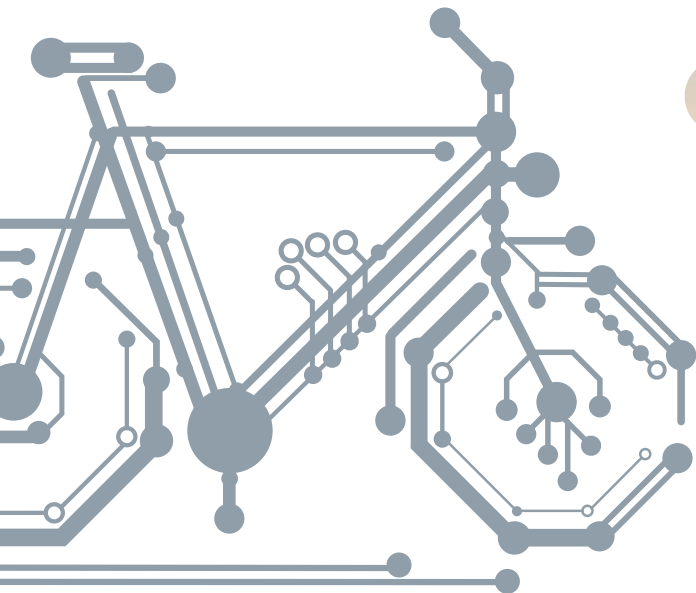
We, as an experienced partner, would be pleased to accompany you along the way.



E-solutions meets electromobility: With specially developed metal-plastic compound systems for the **eBike**, **eCargo** or **eScooter**, we play a decisive role in shaping, and thus propelling, mobility in tomorrow's world. We can develop and produce components for **battery holders** as well as **charge** and **drive units** – customized to your individual requirements.

We not only focus on innovative mobility concepts, but also on intelligent solutions that make life more convenient.

Regardless of whether it's **logistics drones**, **industrial applications**, **agricultural robots** or **exoskeletons** you require, with the help of our comprehensive technology portfolio we offer customized all-in-one solutions, from the development of in-house prototypes to the start of serial production. In this way, we make an important contribution to your success.



WE POOL EXPERTISE FOR JOINT SUCCESS



Are you seeking a professional partner for products and technologies that are geared to the requirements of future generations? Within our group of companies, we bring together a multitude of technologies and can supply a complete package along the entire value chain upon request.

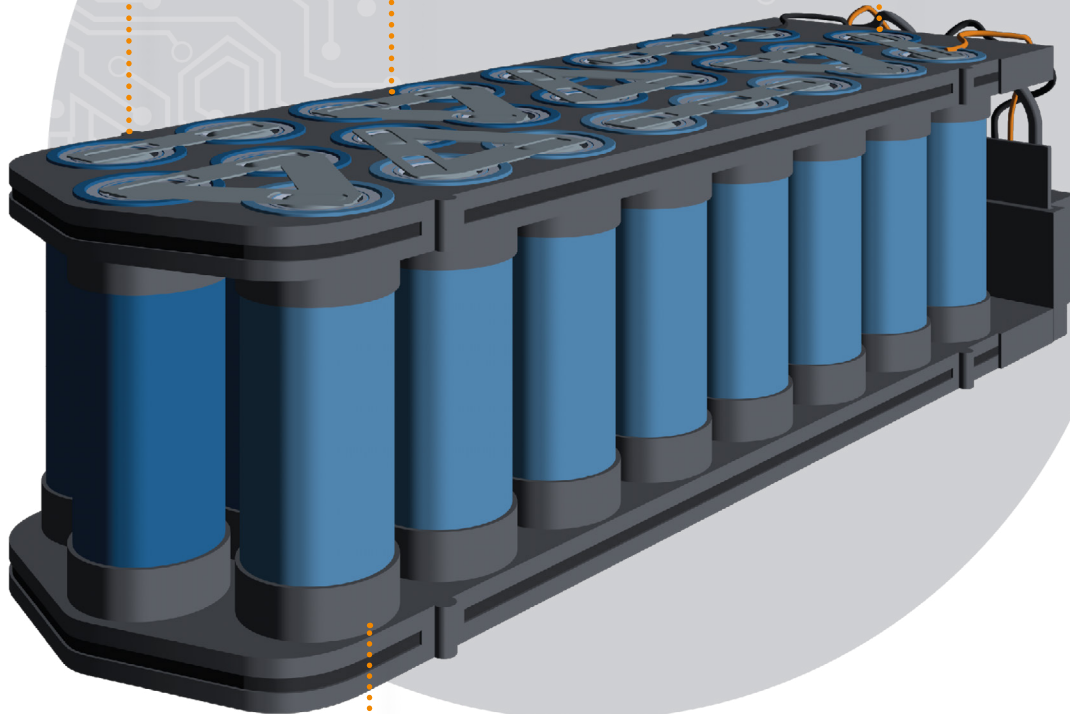
You profit from our specialized, precisely aligned product development and our excellent product design. Additionally, we are also able to cover various volume scenarios in a cost-efficient way, offering a high degree of flexibility with regard to capacity expansions and volume fluctuations.

Our teams at Diehl Metal Applications have professional expertise and produce technologically sophisticated solutions for you – in production and other areas.

Housing made
of plastic

Connection technology:
Use of bond surfaces or
bi-metals

Overmolded and
coated components
(plug and press-fit
contacts)



Battery
cell holder

INTELLIGENT TECHNOLOGIES



DEVELOPMENT

In all phases of product generation and development, you can be sure of having a professional partner at your side.

.....



PROTOTYPE

We develop both innovative single products as well as individual, customized all-in-one solutions, from initial samples to the start of serial production.

.....



PRESS-FIT ZONES

With our press-fit zones, we offer an innovative, solder-free connection technology. Besides the standard surfaces, we also have special surfaces on offer.

.....



SURFACE PLATING

A wide range of advanced electroplating processes that ensure reliability and a long product life. In addition, we offer you the entire range of bondable coating systems.

.....



PRECISION STAMPING TECHNOLOGY

Our stamping technology relies on uncompromising precision achieved through highly developed manufacturing processes with optical, electronic and acoustic monitoring. State-of-the-art stamping machines with in-house toolmaking and design pave the way for your specific requirements.

.....



OVERMOLDING & ASSEMBLY TECHNOLOGY

Development and production of metal-plastic compound systems on the basis of individually developed manufacturing concepts which fulfil specific requirements with utmost reliability, efficiency and effectiveness.

.....

DEPENDABLE

Diehl Metal Applications is your strong development partner, always with the challenges of the future in sight.

CAPABLE

We develop comprehensive and cost-efficient all-in-one solutions at a high technological level and to the required quality standards.

FLEXIBLE

We offer you the flexibility you need. Short development times combined with supreme innovation dynamics ensure that you receive your delivery on schedule and just in time.

We would be happy to support you in the development of your products – simply contact us!



Your contact partner:

Sales Office Berlin

Tel +49 30 84784-438

E-Mail: sales-berlin@diehl.com

www.diehl.com/metall

